

## PAPP A antibody [PAPP A 1-24]

Cat. No. GTX60973

Host	Mouse
Clonality	Monoclonal
Isotype	IgG1
Applications	WB, IHC-P, ELISA
Reactivity	Human

Package  
100 µl

## Applications

## Application Note

\*Optimal dilutions/concentrations should be determined by the researcher.

Suggested dilution	Recommended dilution
WB	Assay dependent
IHC-P	Assay dependent
ELISA	Assay dependent

Not tested in other applications.

Calculated MW 181 kDa. ([Note](#))

**Product Note** This antibody is specific for native human PAPP-A. Heat and SDS denatured PAPP-A is also recognized, but not acid treated PAPP-A.

## Properties

Form	Liquid
Buffer	10mM Phosphate, 500mM NaCl
Preservative	15mM Sodium azide
Storage	Store as concentrated solution. Centrifuge briefly prior to opening vial. Store at 4°C.
Concentration	Batch dependent (Please refer to the vial label for the specific concentration.)
Immunogen	Purified human PAPP-A
Purification	Protein-A purified
Conjugation	Unconjugated



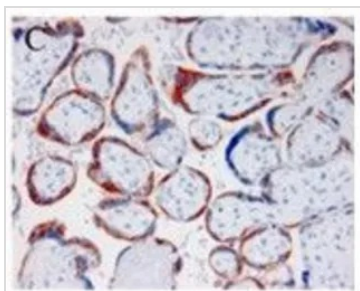
For full product information, images and publications, please visit our [website](#).

For laboratory research use only. Not for any clinical, therapeutic, or diagnostic use in humans or animals. Not for animal or human consumption.

**Note**

Purchasers shall not, and agree not to enable third parties to, analyze, copy, reverse engineer or otherwise attempt to determine the structure or sequence of the product.

#### DATA IMAGES



#### GTX60973 IHC-P Image

Immunohistochemical staining of a formalin-fixed, paraffin-embedded placental tissue with GTX60973



For full product information, images and publications, please visit our [website](#).