

Vitronectin antibody [HV2]

Cat. No. GTX60980

Host	Mouse
Clonality	Monoclonal
Isotype	IgG2b
Applications	WB, IHC-P, ELISA, Purification
Reactivity	Human

Package
100 µl

Applications

Application Note

*Optimal dilutions/concentrations should be determined by the researcher.

Suggested dilution	Recommended dilution
WB	Assay dependent
IHC-P	Assay dependent
ELISA	Assay dependent
Purification	Assay dependent

Not tested in other applications.

Calculated MW 54 kDa. ([Note](#))**Product Note** This antibody is highly specific for vitronectin. There is no evidence for cross-reactivity with other connective tissue proteins (fibronectin, elastin, collagen, laminin).

Properties

Form	Liquid
Buffer	10mM Phosphate, 500mM NaCl
Preservative	15mM Sodium azide
Storage	Store as concentrated solution. Centrifuge briefly prior to opening vial. Store at 4°C.
Concentration	Batch dependent (Please refer to the vial label for the specific concentration.)
Immunogen	Human vitronectin purified from plasma by heparin-affinity chromatography
Purification	Protein-A purified
Conjugation	Unconjugated



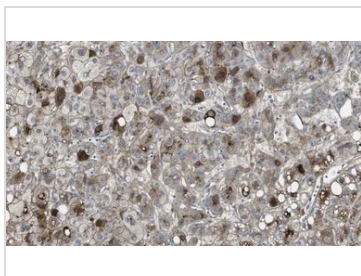
For full product information, images and publications, please visit our [website](#).

For laboratory research use only. Not for any clinical, therapeutic, or diagnostic use in humans or animals. Not for animal or human consumption.

Note

Purchasers shall not, and agree not to enable third parties to, analyze, copy, reverse engineer or otherwise attempt to determine the structure or sequence of the product.

DATA IMAGES



GTX60980 IHC-P Image

Paraffin-embedded human cancerous liver tissue immunostained with GTX60980



For full product information, images and publications, please visit our [website](#).