

ENaC Gamma antibody [5c2] (Biotin)

Cat. No. GTX60994-02

Host	Mouse
Clonality	Monoclonal
Isotype	IgG1
Applications	IHC-P, ELISA
Reactivity	Human

Package

50 µl

Applications

Application Note

*Optimal dilutions/concentrations should be determined by the researcher.

Suggested dilution	Recommended dilution
IHC-P	Assay dependent
ELISA	Assay dependent

Not tested in other applications.

Product Note This antibody is specific for the inhibitory tract of human yENaC

Properties

Form	Liquid
Buffer	PBS, 140mM NaCl
Preservative	15mM Sodium azide
Storage	Store as concentrated solution. Centrifuge briefly prior to opening vial. Store at 4°C.
Concentration	Batch dependent (Please refer to the vial label for the specific concentration.)
Immunogen	The inhibitory peptide from the human yENaC subunit. EAESWNSVSEGGKQPRFSHRIPLC corresponding to amino acid residue 139-160 of human yENaC subunit.
Purification	Biotinylated
Conjugation	Biotin

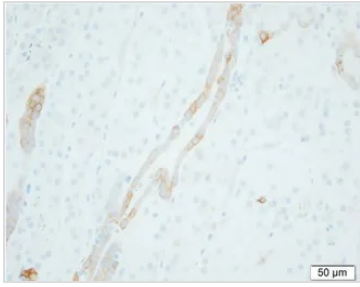
Note

For laboratory research use only. Not for any clinical, therapeutic, or diagnostic use in humans or animals. Not for animal or human consumption.

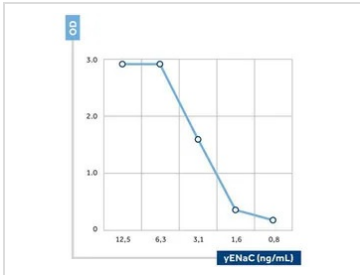
Purchasers shall not, and agree not to enable third parties to, analyze, copy, reverse engineer or otherwise attempt to determine the structure or sequence of the product.



For full product information, images and publications, please visit our [website](#).

DATA IMAGES

GTX60994-02 IHC-P Image

Immunohistochemical staining of a formalin-fixed, paraffin-embedded kidney tissue with GTX60994-02. Courtesy of Per Svenningsen, PhD.


GTX60994-02 ELISA Image

The calibration curve of a sandwich assay for Anti-yENaC using GTX49366 as the capture antibody and GTX60994-02 as the biotinylated detection antibody.



For full product information, images and publications, please visit our [website](https://www.genetex.com).