

PI3 kinase p85 alpha antibody [EP380Y], C-term

Cat. No. GTX61304

| | |
|--------------|-------------------|
| Host | Rabbit |
| Clonality | Monoclonal |
| Isotype | IgG |
| Applications | WB |
| Reactivity | Human, Mouse, Rat |

Package
100 µl

Applications

Application Note

For WB: Use at a dilution of 1:500-2000

Optimal dilutions/concentrations should be determined by the researcher.

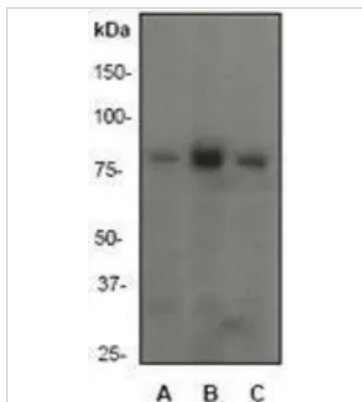
Calculated MW 84 kDa. ([Note](#))

Properties

| | |
|--------------|---|
| Form | Liquid |
| Buffer | 50mM Tris-Glycine, 150mM NaCl, 0.05% BSA, 40% Glycerol |
| Preservative | 0.01% Sodium azide |
| Storage | Store as concentrated solution. Centrifuge briefly prior to opening vial. For short-term storage (1-2 weeks), store at 4°C. For long-term storage, aliquot and store at -20°C or below. Avoid multiple freeze-thaw cycles. |
| Immunogen | A synthetic peptide corresponding to residues in the C-term of human PI3-K 85 alpha was used as an immunogen. |
| Purification | Tissue culture supernatant |
| Conjugation | Unconjugated |
| Note | For <i>In vitro</i> laboratory use only. Not for any clinical, therapeutic, or diagnostic use in humans or animals. Not for animal or human consumption. RabMAb® technology is covered by the following U.S. Patents, No. 5,675,063 and/or 7,429,488. |

For full product information, images and publications, please visit our [website](#).

DATA IMAGES



GTX61304 WB Image

A. Western blot analysis of anti- PI3-K p85 subunit alpha RabMAb (cat. # GTX61304) dilution 1:2000. A: A431 B: MCF-7 C: Raji



For full product information, images and publications, please visit our [website](#).