

## VEGF antibody [EP1176Y], C-term

**Cat. No. GTX61510**

<b>Host</b>	Rabbit
<b>Clonality</b>	Monoclonal
<b>Isotype</b>	IgG
<b>Applications</b>	ICC/IF, IHC-P, FCM, IP
<b>Reactivity</b>	Human, Mouse

References ( 2 )

Package

100 µl

## Applications

**Application Note****Recommended Starting Dilutions:**

For IHC-P: Use at an assay dependent concentration.

For ICC/IF: 1/250 - 1/500.

For Flow Cyt: 1/100.

For IP: 1/50.

Optimal working dilution for a specific application should be determined by the investigator.

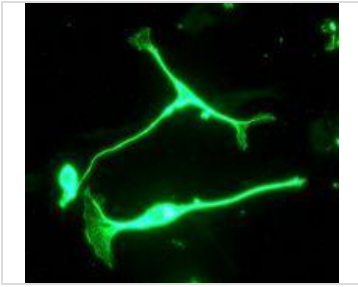
**Calculated MW** 27 kDa. ( [Note](#) )

## Properties

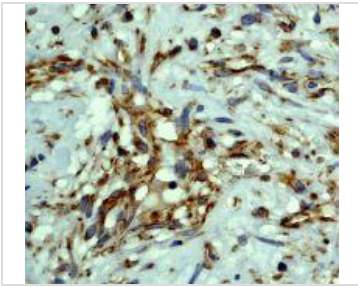
<b>Form</b>	Liquid
<b>Buffer</b>	PBS, 50% Glycerol, 0.05% BSA
<b>Preservative</b>	0.01% Sodium azide
<b>Storage</b>	Store as concentrated solution. Centrifuge briefly prior to opening vial. For short-term storage (1-2 weeks), store at 4°C. For long-term storage, aliquot and store at -20°C or below. Avoid multiple freeze-thaw cycles.
<b>Immunogen</b>	A synthetic peptide corresponding to residues on the C-terminus of human VEGF was used as an immunogen.
<b>Purification</b>	Tissue culture supernatant
<b>Conjugation</b>	Unconjugated
<b>Note</b>	For <i>In vitro</i> laboratory use only. Not for any clinical, therapeutic, or diagnostic use in humans or animals. Not for animal or human consumption. RabMAb® technology is covered by the following U.S. Patents, No. 5,675,063 and/or 7,429,488.

For full product information, images and publications, please visit our [website](#).

## DATA IMAGES

**GTX61510 ICC/IF Image**

C. Immunofluorescent staining of HUVEC cells using anti-VEGF RabMAb (cat. #GTX61510).

**GTX61510 IHC-P Image**

B. Immunohistochemical staining of hemangioma using anti-VEGF RabMAb (cat. #GTX61510).



For full product information, images and publications, please visit our [website](#).