

HLA-A antibody [EP1395Y]

Cat. No. GTX61514

Host	Rabbit
Clonality	Monoclonal
Isotype	IgG
Applications	WB, ICC/IF, IHC-P, IHC-Fr, IHC-Wm, FCM, IP, ELISA
Reactivity	Human

References (1)

Package

100 µl

Applications

Application Note

Recommended Starting Dilutions:

For WB: Use at a dilution of 1:10,000

For IHC: Use at a dilution of 1:250 - 500

For ICC: Use at a dilution of 1:250 - 500

For FACS: Use at a dilution of 1:10

For IP: Use at a dilution of 1:30

Optimal working dilution for a specific application should be determined by the investigator.

Calculated MW 41 kDa. ([Note](#))

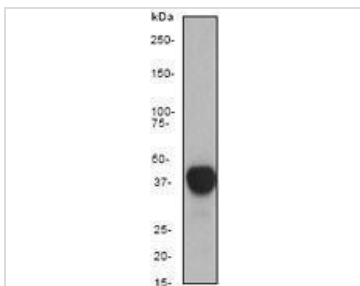
Properties

Form	Liquid
Buffer	50mM Tris-Glycine (pH7.4), 0.15M NaCl, 40% Glycerol, 0.05% BSA
Preservative	0.01% Sodium azide
Storage	Store as concentrated solution. Centrifuge briefly prior to opening vial. For short-term storage (1-2 weeks), store at 4°C. For long-term storage, aliquot and store at -20°C or below. Avoid multiple freeze-thaw cycles.
Immunogen	A synthetic peptide corresponding to residues in human MHC class 1 was used as an immunogen.
Purification	Tissue culture supernatant
Conjugation	Unconjugated
Note	For <i>In vitro</i> laboratory use only. Not for any clinical, therapeutic, or diagnostic use in humans or animals. Not for animal or human consumption. RabMAb® technology is covered by the following U.S. Patents, No. 5,675,063 and/or 7,429,488.



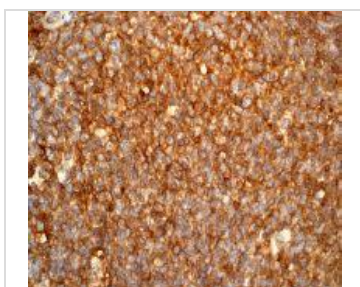
For full product information, images and publications, please visit our [website](#).

DATA IMAGES



GTX61514 WB Image

A. Western blot analysis on Raji cell lysate using anti-MHC class 1 RabMAb (cat. # GTX61514) dilution 1:10000



GTX61514 IHC-P Image

B. Immunohistochemical staining of paraffin-embedded human tonsils using anti-MHC class 1 RabMAb (cat. #GTX61514).



For full product information, images and publications, please visit our [website](https://www.genetex.com).