

Aquaporin 5 antibody [EPR3747]

Cat. No. GTX62313

Host	Rabbit
Clonality	Monoclonal
Isotype	IgG
Application	WB, ICC/IF, IHC-P, IHC
Reactivity	Human

Package
100 µl

APPLICATION

Application Note

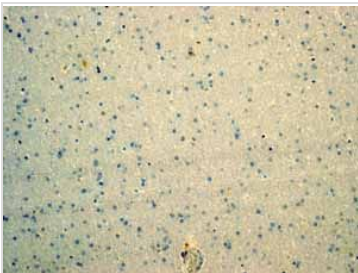
WB: 1/1000 - 1/10000. Predicted molecular weight: 28 kDa. IHC-P: 1/100 - 1/250. Antigen retrieval is recommended before commencing with IHC staining protocol. The use of an HRP/AP polymerized secondary antibody is recommended as stronger signals have been found using these. ICC: 1/100 - 1/250. ICC/IF: Use at an assay dependent concentration.

Calculated MW 28 kDa. ([Note](#))

PROPERTIES

Form	Liquid
Buffer	PBS containing 50% Glycerol, 0.05% BSA and 0.01% Sodium azide.
Storage	Store as concentrated solution. Centrifuge briefly prior to opening vial. For short-term storage (1-2 weeks), store at 4°C. For long-term storage, aliquot and store at -20°C or below. Avoid multiple freeze-thaw cycles.
Immunogen	A synthetic peptide corresponding to residues within Human Aquaporin 5
Purification	Tissue culture supernatant
Conjugation	Unconjugated
Note	For <i>In vitro</i> laboratory use only. Not for any clinical, therapeutic, or diagnostic use in humans or animals. Not for animal or human consumption. RabMAb® technology is covered by the following U.S. Patents, No. 5,675,063 and/or 7,429,488.

DATA IMAGES

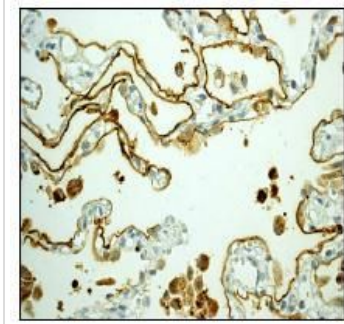


GTX62313 IHC Image

IHC analysis of normal brain tissue with Aquaporin 5 antibody [EPR3747] shows a negative staining.

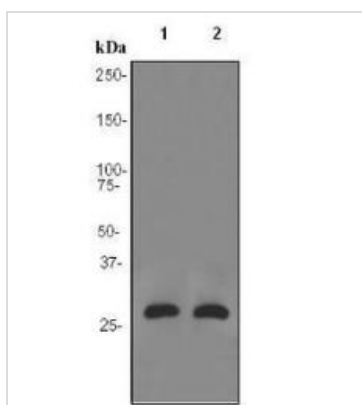


For full product information, images and publications, please visit our [website](#).



GTX62313 IHC-P Image

IHC-P analysis of human lung tissue using Aquaporin 5 antibody [EPR3747] at a dilution of 1:100.



GTX62313 WB Image

WB analysis of lysates from (1) fetal lung and (2) SW480 cells (10 µg per lane) using Aquaporin 5 antibody [EPR3747] at a dilution of 1:1,000.



For full product information, images and publications, please visit our [website](https://www.genetex.com).