

Oct4 antibody [EPR2054]

Cat. No. GTX62413

Host	Rabbit
Clonality	Monoclonal
Isotype	IgG
Applications	WB, IHC-P, FCM, IP
Reactivity	Human

Package
100 µl

Applications

Application Note

Recommended Starting Dilutions:

For WB: Use at a dilution of 1:1,000 - 10,000

For IHC: Use at a dilution of 1:500 - 1,000

For FACS: Use at a dilution of 1:10 - 100

For IP: Use at a dilution of 1:10 - 100

Optimal working dilution for a specific application should be determined by the investigator.

Calculated MW 39 kDa. ([Note](#))

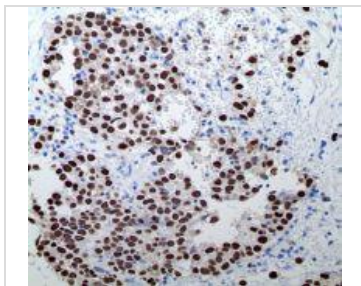
Properties

Form	Liquid
Buffer	50 mM Tris-Glycine (pH 7.4), 0.15 M NaCl, 40% Glycerol, 0.01% sodium azide and 0.05% BSA.
Storage	Store as concentrated solution. Centrifuge briefly prior to opening vial. For short-term storage (1-2 weeks), store at 4°C. For long-term storage, aliquot and store at -20°C or below. Avoid multiple freeze-thaw cycles.
Immunogen	A synthetic peptide corresponding to residues in human Oct-4 was used as an immunogen.
Purification	Tissue culture supernatant
Conjugation	Unconjugated
Note	For <i>In vitro</i> laboratory use only. Not for any clinical, therapeutic, or diagnostic use in humans or animals. Not for animal or human consumption. RabMAb® technology is covered by the following U.S. Patents, No. 5,675,063 and/or 7,429,488.



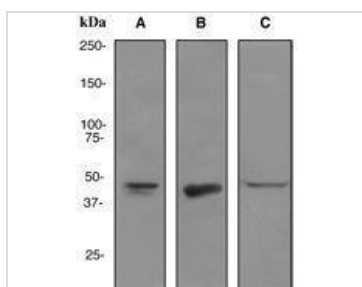
For full product information, images and publications, please visit our [website](#).

DATA IMAGES



GTX62413 IHC-P Image

Immunohistochemical staining of paraffin-embedded human ovarian dysgerminoma using anti-Oct-4 RabMAb (cat. #GTX62413).



GTX62413 WB Image

Western blot analysis on (A) Seminoma (B) NCCIT and (C) HeLa cell lysates using anti-Oct-4 RabMAb (cat. #GTX62413).



For full product information, images and publications, please visit our [website](https://www.genetex.com).