

Cytokeratin 14 antibody [EPR1612]

Cat. No. GTX62683

Host	Rabbit
Clonality	Monoclonal
Isotype	IgG
Applications	WB, ICC/IF, IHC-P, IHC
Reactivity	Human

Package
100 µl

Applications

Application Note

*Optimal dilutions/concentrations should be determined by the researcher.

Suggested dilution	Recommended dilution
WB	Assay dependent
ICC/IF	Assay dependent
IHC-P	Assay dependent
IHC	Assay dependent

Not tested in other applications.

Calculated MW 52 kDa. ([Note](#))

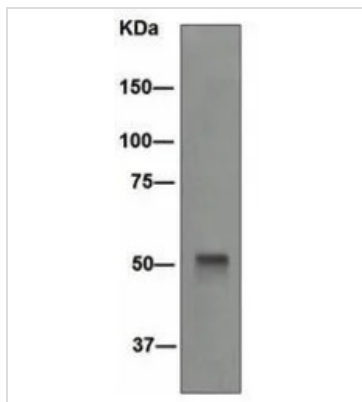
Properties

Form	Liquid
Buffer	PBS, 50% Glycerol, 0.05% BSA
Preservative	0.01% Sodium azide
Storage	Store as concentrated solution. Centrifuge briefly prior to opening vial. For short-term storage (1-2 weeks), store at 4°C. For long-term storage, aliquot and store at -20°C or below. Avoid multiple freeze-thaw cycles.
Immunogen	Synthetic peptide corresponding to residues in human Cytokeratin 14.
Purification	Tissue culture supernatant
Conjugation	Unconjugated
Note	For <i>In vitro</i> laboratory use only. Not for any clinical, therapeutic, or diagnostic use in humans or animals. Not for animal or human consumption. RabMAb® technology is covered by the following U.S. Patents, No. 5,675,063 and/or 7,429,488.



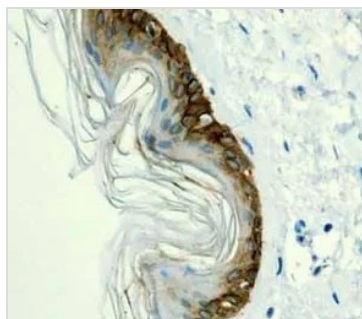
For full product information, images and publications, please visit our [website](#).

DATA IMAGES



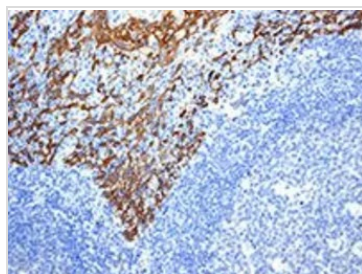
GTX62683 WB Image

WB analysis of A431 lysate (10 µg) using Cytokeratin 14 antibody [EPR1612] at a dilution of 1:10,000.



GTX62683 IHC Image

IHC analysis of normal skin tissue using Cytokeratin 14 antibody [EPR1612].



GTX62683 IHC-P Image

IHC-P analysis of human tonsil tissue using Cytokeratin 14 antibody [EPR1612] at a dilution of 1:250.



For full product information, images and publications, please visit our [website](https://www.genetex.com).