

IKK alpha antibody [EPR464]

Cat. No. GTX62710

Host	Rabbit
Clonality	Monoclonal
Isotype	IgG
Applications	WB, ICC/IF, IHC-P, IP
Reactivity	Human

References (1)

Package

100 µl

Applications

Application Note

Recommended Starting Dilutions:

For WB: Use at a dilution of 1:1,000 - 10,000

For IHC: Use at a dilution of 1:100-250

For ICC: Use at a dilution of 1:50-100

For IP: Use at a dilution of 1:10-100

Optimal working dilution for a specific application should be determined by the investigator.

Calculated MW 85 kDa. ([Note](#))

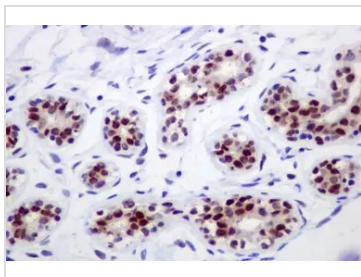
Properties

Form	Liquid
Buffer	50mM Tris-Glycine, 150mM NaCl, 0.05% BSA, 40% Glycerol
Preservative	0.01% Sodium azide
Storage	Store as concentrated solution. Centrifuge briefly prior to opening vial. For short-term storage (1-2 weeks), store at 4°C. For long-term storage, aliquot and store at -20°C or below. Avoid multiple freeze-thaw cycles.
Immunogen	A synthetic peptide corresponding to residues in human IKK alpha was used as an immunogen.
Purification	Tissue culture supernatant
Conjugation	Unconjugated
Note	For <i>In vitro</i> laboratory use only. Not for any clinical, therapeutic, or diagnostic use in humans or animals. Not for animal or human consumption. RabMAb® technology is covered by the following U.S. Patents, No. 5,675,063 and/or 7,429,488.



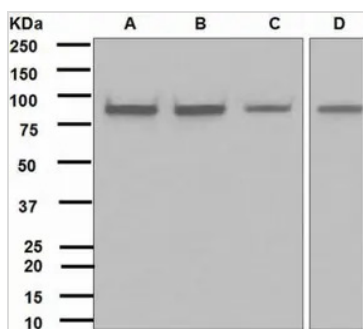
For full product information, images and publications, please visit our [website](#).

DATA IMAGES



GTX62710 IHC-P Image

Immunohistochemical analysis of paraffin-embedded human breast tissue using anti-IKK alpha RabMAb (cat. #GTX62710).



GTX62710 WB Image

Western blot analysis on (A) Jurkat (B) HeLa (C) HepG2 and (D) Daudi cell lysates using anti-IKK alpha RabMAb (cat. #GTX62710).



For full product information, images and publications, please visit our [website](https://www.genetex.com).