

SOX2 antibody [GT1876]

Cat. No. GTX627404

Host	Mouse
Clonality	Monoclonal
Isotype	IgG1
Applications	WB, ICC/IF, IHC-P, IHC-Fr, FCM, IP
Reactivity	Human, Mouse, Rat, Zebrafish

References (15)

★★★★☆ Review (2)

Package

100 µl, 25 µl

Applications

Application Note

*Optimal dilutions/concentrations should be determined by the researcher.

Suggested dilution	Recommended dilution
WB	1:500-1:10000
ICC/IF	Assay dependent
IHC-P	Assay dependent
IHC-Fr	1:100-1:1000
FCM	1:50-1:200
IP	1:100-1:500

Note : The use of GTX627404 for zebrafish is based on WB testing. For IHC or IHC whole mount using zebrafish samples, we recommend GTX124477.

Not tested in other applications.

Calculated MW 34 kDa. ([Note](#))

Product Note

Highly recommended for IHC-P in mouse tissues. For human IHC-P, we recommend GTX627405. This antibody may not be suitable for Rat IHC-P assay, as its Rat reactivity is based on IHC-Fr testing. For IHC or IHC whole mount using zebrafish samples, we recommend GTX124477.

Properties

Form	Liquid
Buffer	PBS
Preservative	No preservatives
Storage	Store as concentrated solution. Centrifuge briefly prior to opening vial. For short-term storage (1-2 weeks), store at 4°C. For long-term storage, aliquot and store at -20°C or below. Avoid multiple freeze-thaw cycles.
Concentration	1 mg/ml (Please refer to the vial label for the specific concentration.)
Immunogen	Recombinant protein encompassing a sequence within the center region of human SOX2. The exact sequence is proprietary.



For full product information, images and publications, please visit our [website](#).

Purification Affinity purified by Protein G.

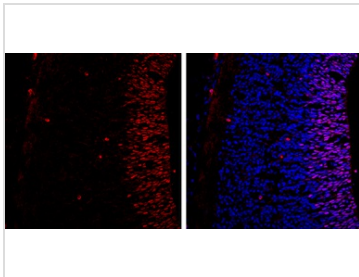
Conjugation Unconjugated

Note

For laboratory research use only. Not for any clinical, therapeutic, or diagnostic use in humans or animals. Not for animal or human consumption.

Purchasers shall not, and agree not to enable third parties to, analyze, copy, reverse engineer or otherwise attempt to determine the structure or sequence of the product.

DATA IMAGES



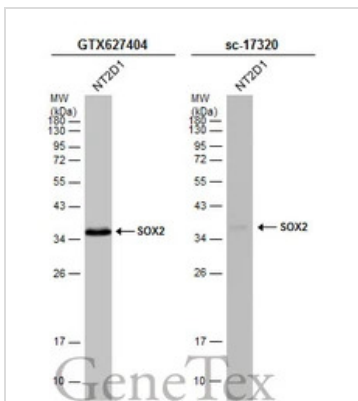
GTX627404 IHC-Fr Image

SOX2 antibody [GT1876] detects SOX2 protein expression at nucleus by immunohistochemical analysis.

Sample: Frozen sectioned E13.5 Rat brain.

Red: SOX2 protein stained by SOX2 antibody [GT1876] (GTX627404) diluted at 1:250.

Blue: Fluoroshield with DAPI (GTX30920).



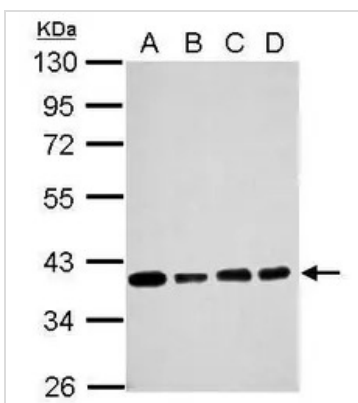
GTX627404 WB Image

Whole cell extract (30 µg) was separated by 12% SDS-PAGE, and the membranes were blotted with SOX2

antibody [GT1876] (GTX627404) diluted at 1:1000 and competitor's antibody (sc-17320) diluted at 1:500.

The HRP-conjugated anti-mouse IgG antibody (GTX213111-01) was used to detect the primary antibody.

*The competitor is not affiliated with GeneTex and does not endorse this product.



GTX627404 WB Image

Sample (30 ug of whole cell lysate)

A: NT2D1

B: PC-3

C: U87-MG

D: SK-N-SH

10% SDS PAGE

GTX627404 diluted at 1:5000



For full product information, images and publications, please visit our [website](https://www.genetex.com).