

## SOX2 antibody [GT1876]

**Cat. No. GTX627404**

<b>Host</b>	Mouse
<b>Clonality</b>	Monoclonal
<b>Isotype</b>	IgG1
<b>Applications</b>	WB, ICC/IF, IHC-P, IHC-Fr, FCM, IP
<b>Reactivity</b>	Human, Mouse, Rat, Zebrafish

References ( 15 )

★★★★☆ Review ( 2 )

Package

100 µl, 25 µl

## Applications

**Application Note**

\*Optimal dilutions/concentrations should be determined by the researcher.

Suggested dilution	Recommended dilution
WB	1:500-1:10000
ICC/IF	Assay dependent
IHC-P	Assay dependent
IHC-Fr	1:100-1:1000
FCM	1:50-1:200
IP	1:100-1:500

**Note : The use of GTX627404 for zebrafish is based on WB testing. For IHC or IHC whole mount using zebrafish samples, we recommend GTX124477.**

Not tested in other applications.

**Calculated MW** 34 kDa. ( [Note](#) )

## Properties

<b>Form</b>	Liquid
<b>Buffer</b>	PBS
<b>Preservative</b>	No preservative
<b>Storage</b>	Store as concentrated solution. Centrifuge briefly prior to opening vial. For short-term storage (1-2 weeks), store at 4°C. For long-term storage, aliquot and store at -20°C or below. Avoid multiple freeze-thaw cycles.
<b>Concentration</b>	1 mg/ml (Please refer to the vial label for the specific concentration.)
<b>Immunogen</b>	Recombinant protein encompassing a sequence within the center region of human SOX2. The exact sequence is proprietary.
<b>Purification</b>	Affinity purified by Protein G.
<b>Conjugation</b>	Unconjugated

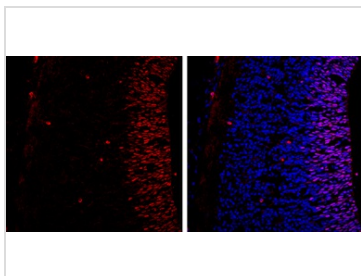
For full product information, images and publications, please visit our [website](#).

For laboratory research use only. Not for any clinical, therapeutic, or diagnostic use in humans or animals. Not for animal or human consumption.

## Note

Purchasers shall not, and agree not to enable third parties to, analyze, copy, reverse engineer or otherwise attempt to determine the structure or sequence of the product.

## DATA IMAGES



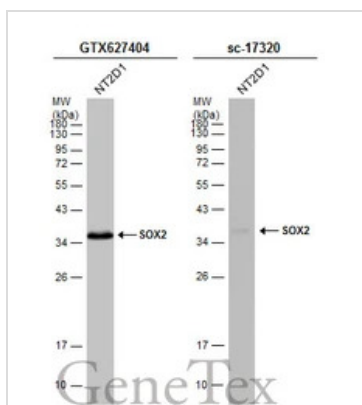
### GTX627404 IHC-Fr Image

SOX2 antibody [GT1876] detects SOX2 protein expression at nucleus by immunohistochemical analysis.

Sample: Frozen sectioned E13.5 Rat brain.

Red: SOX2 protein stained by SOX2 antibody [GT1876] (GTX627404) diluted at 1:250.

Blue: Fluoroshield with DAPI (GTX30920).



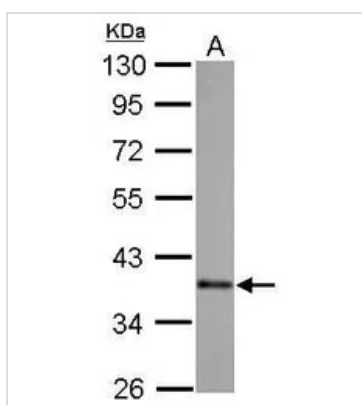
### GTX627404 WB Image

Whole cell extract (30 µg) was separated by 12% SDS-PAGE, and the membranes were blotted with SOX2

antibody [GT1876] (GTX627404) diluted at 1:1000 and competitor's antibody (sc-17320) diluted at 1:500.

The HRP-conjugated anti-mouse IgG antibody (GTX213111-01) was used to detect the primary antibody.

\*The competitor is not affiliated with GeneTex and does not endorse this product.



### GTX627404 WB Image

SOX2 antibody [GT1876] detects SOX2 protein by Western blot analysis.

A. 30 µg zebrafish eye lysate/extract

10 % SDS-PAGE

SOX2 antibody [GT1876] (GTX627404) dilution: 1:500



For full product information, images and publications, please visit our [website](https://www.genetex.com).