

## Oct4 antibody [GT735]

Cat. No. GTX627423

Host	Mouse
Clonality	Monoclonal
Isotype	IgG1
Applications	WB, ICC/IF, FCM, IP
Reactivity	Human

★★★★☆ Review ( 1 )

Package  
100 µl, 25 µl

## Applications

## Application Note

\*Optimal dilutions/concentrations should be determined by the researcher.

Suggested dilution	Recommended dilution
WB	1:1000-1:10000
ICC/IF	1:100-1:1000
FCM	1:50-1:200
IP	1:100-1:500

Not tested in other applications.

Calculated MW 39 kDa. ( [Note](#) )

## Properties

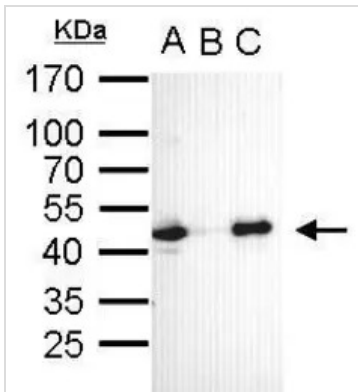
Form	Liquid
Buffer	PBS
Preservative	No preservative
Storage	Store as concentrated solution. Centrifuge briefly prior to opening vial. For short-term storage (1-2 weeks), store at 4°C. For long-term storage, aliquot and store at -20°C or below. Avoid multiple freeze-thaw cycles.
Concentration	1 mg/ml (Please refer to the vial label for the specific concentration.)
Immunogen	Recombinant protein encompassing a sequence within the center region of human Oct4. The exact sequence is proprietary.
Purification	Affinity purified by Protein G.
Conjugation	Unconjugated

## Note

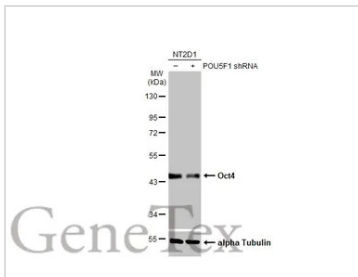
For laboratory research use only. Not for any clinical, therapeutic, or diagnostic use in humans or animals. Not for animal or human consumption.

Purchasers shall not, and agree not to enable third parties to, analyze, copy, reverse engineer or otherwise attempt to determine the structure or sequence of the product.

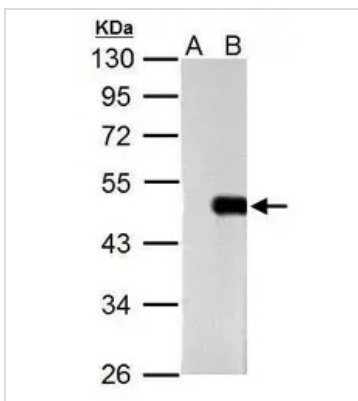
For full product information, images and publications, please visit our [website](#).

**DATA IMAGES**

**GTX627423 IP Image**

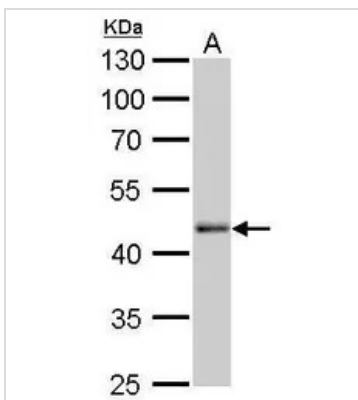
Oct4 antibody immunoprecipitates Oct4 protein in IP experiments. IP Sample: cell lysate/extract of Oct4 gene transfected 293T cells A. Cell lysate/extract of transfected 293T cell B. Control with 2 µg of preimmune mouse IgG C. Immunoprecipitation of Oct4 by 2 µg of Oct4 antibody (GTX627423) 12% SDS-PAGE The immunoprecipitated Oct4 protein was detected by Oct4 antibody (GTX627423) diluted at 1:1000. EasyBlot anti-mouse IgG (GTX221667-01) was used as a secondary reagent.


**GTX627423 WB Image**

Non-transfected (–) and transfected (+) NT2D1 whole cell extracts (30 µg) were separated by 10% SDS-PAGE, and the membrane was blotted with Oct4 antibody [GT735] (GTX627423) diluted at 1:2000. The HRP-conjugated anti-mouse IgG antibody (GTX213111-01) was used to detect the primary antibody.


**GTX627423 WB Image**

Sample (10 ug of whole cell lysate)  
A: Non-transfected HeLa lysates  
B: OCT 3/4 transfected HeLa lysates  
10% SDS PAGE  
GTX627423 diluted at 1:5000


**GTX627423 WB Image**

Oct4 antibody [GT735] detects Oct4 protein by Western blot analysis.  
A. 30 µg human ESC whole cell lysate/extract  
10 % SDS-PAGE  
(GTX627423) dilution: 1:1000



For full product information, images and publications, please visit our [website](http://www.genetex.com).