

Lin28A antibody [GT717]

Cat. No. GTX628138

Host	Mouse
Clonality	Monoclonal
Isotype	IgG2a
Applications	WB, ICC/IF, IHC-P, FCM
Reactivity	Human, Mouse

References (2)

★★★★☆ Review (1)

Package

100 µl, 25 µl

Applications

Application Note

*Optimal dilutions/concentrations should be determined by the researcher.

Suggested dilution	Recommended dilution
WB	1:500-1:3000
ICC/IF	1:100-1:1000
IHC-P	1:100-1:1000
FCM	1:50-1:200

Not tested in other applications.

Calculated MW 23 kDa. ([Note](#))

Properties

Form	Liquid
Buffer	PBS
Preservative	No preservatives
Storage	Store as concentrated solution. Centrifuge briefly prior to opening vial. For short-term storage (1-2 weeks), store at 4°C. For long-term storage, aliquot and store at -20°C or below. Avoid multiple freeze-thaw cycles.
Concentration	1 mg/ml (Please refer to the vial label for the specific concentration.)
Immunogen	Recombinant protein encompassing a sequence within the center region of human Lin28A. The exact sequence is proprietary.
Purification	Affinity purified by Protein G.
Conjugation	Unconjugated



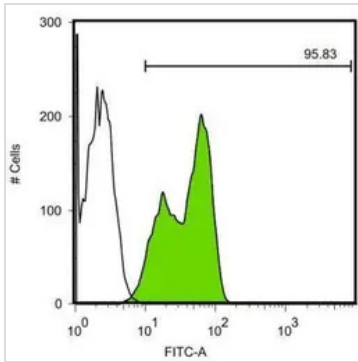
For full product information, images and publications, please visit our [website](#).

For laboratory research use only. Not for any clinical, therapeutic, or diagnostic use in humans or animals. Not for animal or human consumption.

Note

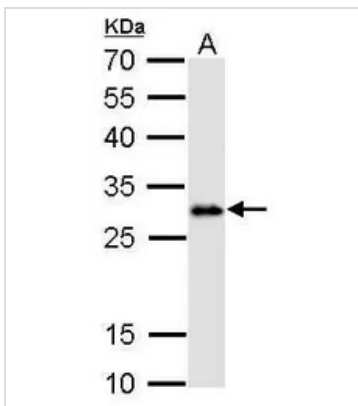
Purchasers shall not, and agree not to enable third parties to, analyze, copy, reverse engineer or otherwise attempt to determine the structure or sequence of the product.

DATA IMAGES



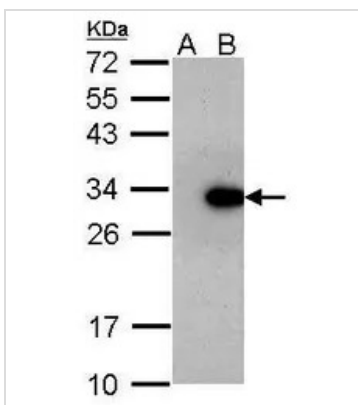
GTX628138 FCM Image

Lin28A antibody [GT717] detects Lin28A protein by flow cytometry analysis. Sample: Human embryonic stem cells Black: Isotype control dilution: 1:50 Green: Lin28A antibody [GT717] dilution: 1:50



GTX628138 WB Image

Lin28A antibody [GT717] detects LIN28 protein by Western blot analysis.
A. 30 µg human ESC whole cell lysate/extract
12 % SDS-PAGE
Lin28A antibody [GT717] (GTX628138) dilution: 1:1000



GTX628138 WB Image

Sample (30 ug of whole cell lysate)
A: Non-transfected HeLa lysates
B: LIN28 transfected HeLa lysates
12% SDS PAGE
GTX628138 diluted at 1:1000



For full product information, images and publications, please visit our [website](https://www.genetex.com).