

Citrate synthase antibody [GT1761]

Cat. No. GTX628143

Host	Mouse
Clonality	Monoclonal
Isotype	IgG2a
Application	WB, ICC/IF, IHC-P
Reactivity	Human, Mouse, Rat, Zebrafish

Reference (6)

Package

100 µl, 25 µl

PRODUCT

Summary

Citrate synthase antibody detects citrate synthase, the 52 kDa enzyme that catalyzes the first reaction in the citric acid cycle (Krebs cycle) to convert acetyl-CoA and oxaloacetate to citrate and CoA-SH. Citrate synthase exists within the mitochondrial matrix in eukaryotic cells and is used commonly as a marker of intact mitochondria.

APPLICATION

Application Note

*Optimal dilutions/concentrations should be determined by the researcher.

Suggested dilution	Recommended dilution
WB	1:500-1:3000
ICC/IF	1:100-1:1000
IHC-P	1:100-1:1000

Not tested in other applications.

Calculated MW 52 kDa. ([Note](#))

PROPERTIES

Form	Liquid
Buffer	PBS
Preservative	No preservative
Storage	Store as concentrated solution. Centrifuge briefly prior to opening vial. For short-term storage (1-2 weeks), store at 4°C. For long-term storage, aliquot and store at -20°C or below. Avoid multiple freeze-thaw cycles.
Concentration	1 mg/ml (Please refer to the vial label for the specific concentration.)
Immunogen	Recombinant protein encompassing a sequence within the center region of human Citrate synthetase. The exact sequence is proprietary.
Purification	Affinity purified by Protein G.
Conjugation	Unconjugated



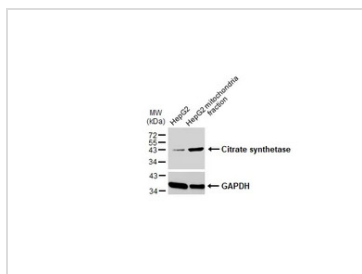
For full product information, images and publications, please visit our [website](#).

For laboratory research use only. Not for any clinical, therapeutic, or diagnostic use in humans or animals. Not for animal or human consumption.

Note

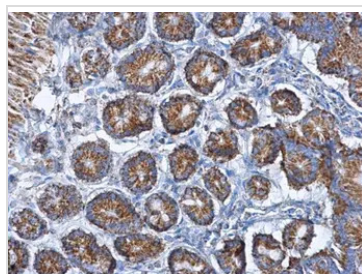
Purchasers shall not, and agree not to enable third parties to, analyze, copy, reverse engineer or otherwise attempt to determine the structure or sequence of the product.

DATA IMAGES



GTX628143 WB Image

HepG2 and mitochondria extracts (30 µg) were separated by SDS-PAGE, and the membrane was blotted with Citrate synthetase antibody [GT1761] (GTX628143) diluted at 1:1000. The HRP-conjugated anti-mouse IgG antibody (GTX213111-01) was used to detect the primary antibody.



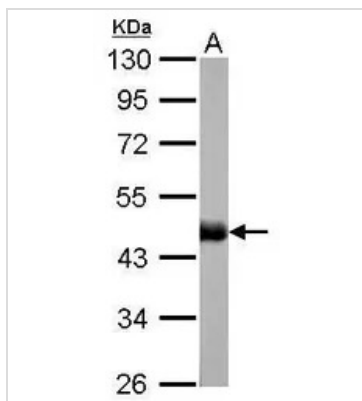
GTX628143 IHC-P Image

Citrate synthetase antibody [GT1761] detects Citrate synthetase protein at mitochondria on mouse heart by immunohistochemical analysis.

Sample: Paraffin-embedded mouse heart.

Citrate synthetase antibody [GT1761] (GTX628143) dilution: 1:200.

Antigen Retrieval: Trilogy™ (EDTA based, pH 8.0) buffer, 15min



GTX628143 WB Image

Citrate synthetase antibody [GT1761] detects CS protein by western blot analysis.

A. 30 µg zebrafish brain lysate/extract

10% SDS-PAGE

Citrate synthetase antibody [GT1761] (GTX628143) dilution: 1:1000

The HRP-conjugated anti-mouse IgG antibody (GTX213111-01) was used to detect the primary antibody.



For full product information, images and publications, please visit our [website](https://www.genetex.com).