

Citrate synthase antibody [GT2061]

Cat. No. GTX628144

Host	Mouse
Clonality	Monoclonal
Isotype	IgG2b
Applications	WB, ICC/IF, IHC-P
Reactivity	Human, Mouse, Rat, Zebrafish, Japanese Medaka

Package
100 µl, 25 µl

Applications

Application Note

*Optimal dilutions/concentrations should be determined by the researcher.

Suggested dilution	Recommended dilution
WB	1:500-1:3000
ICC/IF	1:100-1:1000
IHC-P	1:100-1:1000

Not tested in other applications.

Calculated MW 52 kDa. ([Note](#))

Properties

Form	Liquid
Buffer	PBS
Preservative	No preservatives
Storage	Store as concentrated solution. Centrifuge briefly prior to opening vial. For short-term storage (1-2 weeks), store at 4°C. For long-term storage, aliquot and store at -20°C or below. Avoid multiple freeze-thaw cycles.
Concentration	1 mg/ml (Please refer to the vial label for the specific concentration.)
Immunogen	Recombinant protein encompassing a sequence within the center region of human Citrate synthetase. The exact sequence is proprietary.
Purification	Affinity purified by Protein G.
Conjugation	Unconjugated

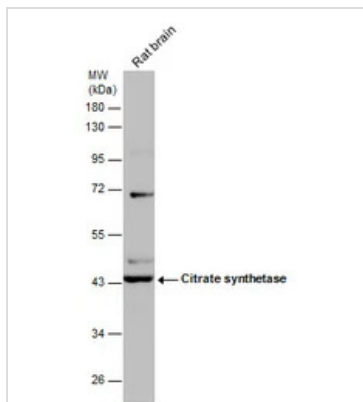
Note For laboratory research use only. Not for any clinical, therapeutic, or diagnostic use in humans or animals. Not for animal or human consumption.

Purchasers shall not, and agree not to enable third parties to, analyze, copy, reverse engineer or otherwise attempt to determine the structure or sequence of the product.



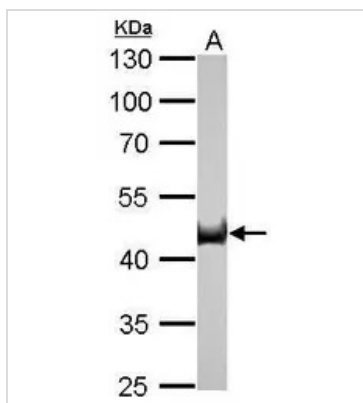
For full product information, images and publications, please visit our [website](#).

DATA IMAGES



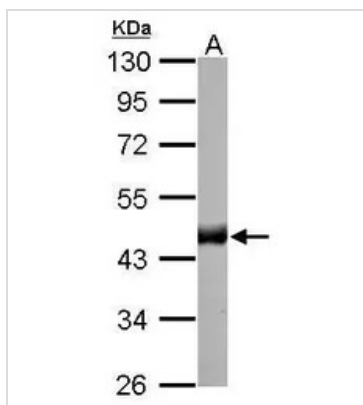
GTX628144 WB Image

Rat tissue extract (50 µg) was separated by 10% SDS-PAGE, and the membrane was blotted with Citrate synthetase antibody [GT2061] (GTX628144) diluted at 1:1000.



GTX628144 WB Image

Citrate synthetase antibody [GT2061] detects CS protein by Western blot analysis.
 A. 30 µg zebrafish heart lysate/extract
 10 % SDS-PAGE
 Citrate synthetase antibody [GT2061] (GTX628144) dilution: 1:1000



GTX628144 WB Image

Citrate synthetase antibody [GT2061] detects CS protein by Western blot analysis.
 A. 30 µg zebrafish brain lysate/extract
 10 % SDS-PAGE
 Citrate synthetase antibody [GT2061] (GTX628144) dilution: 1:1000



For full product information, images and publications, please visit our [website](#).