

HNF1 alpha antibody [GT4110]

Cat. No. GTX628240

Host	Mouse
Clonality	Monoclonal
Isotype	IgG2a
Applications	WB, IHC-P
Reactivity	Human, Mouse

References (1)

Package

100 µl, 25 µl

Applications

Application Note

*Optimal dilutions/concentrations should be determined by the researcher.

Suggested dilution	Recommended dilution
WB	1:500-1:3000
IHC-P	1:100-1:1000

Not tested in other applications.

Calculated MW 67 kDa. ([Note](#))

Properties

Form	Liquid
Buffer	PBS
Preservative	No preservative
Storage	Store as concentrated solution. Centrifuge briefly prior to opening vial. For short-term storage (1-2 weeks), store at 4°C. For long-term storage, aliquot and store at -20°C or below. Avoid multiple freeze-thaw cycles.
Concentration	1 mg/ml (Please refer to the vial label for the specific concentration.)
Immunogen	Recombinant protein encompassing a sequence within the center region of human HNF1 alpha. The exact sequence is proprietary.
Purification	Affinity purified by Protein G.
Conjugation	Unconjugated

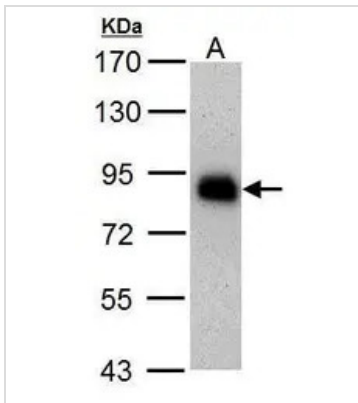
Note

For laboratory research use only. Not for any clinical, therapeutic, or diagnostic use in humans or animals. Not for animal or human consumption.

Purchasers shall not, and agree not to enable third parties to, analyze, copy, reverse engineer or otherwise attempt to determine the structure or sequence of the product.



For full product information, images and publications, please visit our [website](#).

DATA IMAGES

GTx628240 WB Image

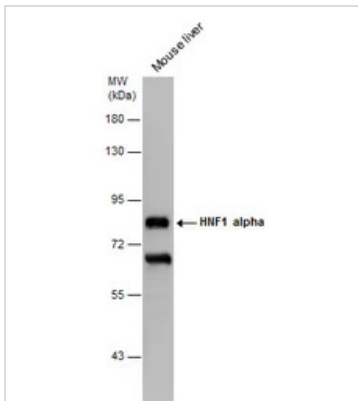
Sample (30 µg of whole cell lysate)

A: HepG2

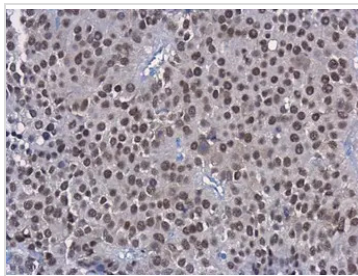
7.5% SDS PAGE

GTx628240 diluted at 1:1000

The HRP-conjugated anti-mouse IgG antibody (GTx213111-01) was used to detect the primary antibody.


GTx628240 WB Image

Mouse tissue extract (50 µg) was separated by 7.5% SDS-PAGE, and the membrane was blotted with HNF1 alpha antibody [GT4110] (GTx628240) diluted at 1:2000. The HRP-conjugated anti-mouse IgG antibody (GTx213111-01) was used to detect the primary antibody, and the signal was developed with Trident ECL plus-Enhanced.


GTx628240 IHC-P Image

HNF1 alpha antibody [GT4110] detects HNF1 alpha protein at nucleus in human SW480 by immunohistochemical analysis.

Sample: Paraffin-embedded human SW480.

HNF1 alpha antibody [GT4110] (GTx628240) diluted at 1:250.

Antigen Retrieval: Citrate buffer, pH 6.0, 15 min



For full product information, images and publications, please visit our [website](https://www.genetex.com).