

TET3 antibody [GT334]

Cat. No. GTX628257

Host	Mouse
Clonality	Monoclonal
Isotype	IgG2b
Applications	WB
Reactivity	Human

Package
100 µl, 25 µl

Applications

Application Note

*Optimal dilutions/concentrations should be determined by the researcher.

Suggested dilution	Recommended dilution
--------------------	----------------------

WB	1:1000-1:10000
----	----------------

Not tested in other applications.

Calculated MW	179 kDa. (Note)
----------------------	-----------------------------------

Properties

Form	Liquid
-------------	--------

Buffer	PBS
---------------	-----

Preservative	No preservatives
---------------------	------------------

Storage	Store as concentrated solution. Centrifuge briefly prior to opening vial. For short-term storage (1-2 weeks), store at 4°C. For long-term storage, aliquot and store at -20°C or below. Avoid multiple freeze-thaw cycles.
----------------	--

Concentration	1 mg/ml (Please refer to the vial label for the specific concentration.)
----------------------	--

Immunogen	Recombinant protein encompassing a sequence within the C-terminus region of human TET3. The exact sequence is proprietary.
------------------	--

Purification	Affinity purified by Protein G.
---------------------	---------------------------------

Conjugation	Unconjugated
--------------------	--------------

Note

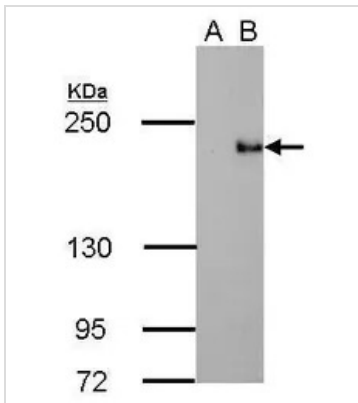
For laboratory research use only. Not for any clinical, therapeutic, or diagnostic use in humans or animals. Not for animal or human consumption.

Purchasers shall not, and agree not to enable third parties to, analyze, copy, reverse engineer or otherwise attempt to determine the structure or sequence of the product.



For full product information, images and publications, please visit our [website](#).

DATA IMAGES

**GTX628257 WB Image**

TET3 antibody [GT334] detects TET3 protein by Western blot analysis.

A. 30 μ g 293T whole cell lysate/extract

B. 30 μ g whole cell lysate/extract of flag-human TET3-transfected 293T cells

5 % SDS-PAGE

TET3 antibody [GT334] (GTX628257) dilution: 1:5000



For full product information, images and publications, please visit our [website](#).