

## SUPV3L1 antibody [GT244]

Cat. No. GTX628260

Host	Mouse
Clonality	Monoclonal
Isotype	IgG1
Applications	WB, IHC-P
Reactivity	Human

References ( 1 )

Package

100 µl, 25 µl

## Applications

## Application Note

\*Optimal dilutions/concentrations should be determined by the researcher.

Suggested dilution	Recommended dilution
WB	1:500-1:10000
IHC-P	1:100-1:1000

Not tested in other applications.

Calculated MW 88 kDa. ( [Note](#) )

## Properties

Form	Liquid
Buffer	PBS
Preservative	No preservatives
Storage	Store as concentrated solution. Centrifuge briefly prior to opening vial. For short-term storage (1-2 weeks), store at 4°C. For long-term storage, aliquot and store at -20°C or below. Avoid multiple freeze-thaw cycles.
Concentration	1 mg/ml (Please refer to the vial label for the specific concentration.)
Immunogen	The immunogen used to generate this antibody corresponds to human SUPV3L1
Purification	Affinity purified by Protein G.
Conjugation	Unconjugated

## Note

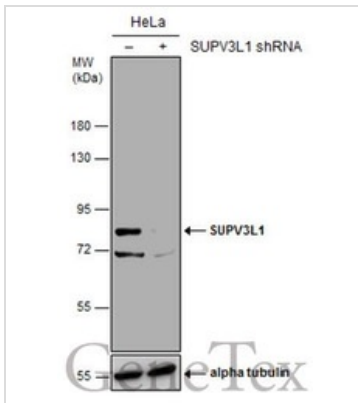
For laboratory research use only. Not for any clinical, therapeutic, or diagnostic use in humans or animals. Not for animal or human consumption.

Purchasers shall not, and agree not to enable third parties to, analyze, copy, reverse engineer or otherwise attempt to determine the structure or sequence of the product.



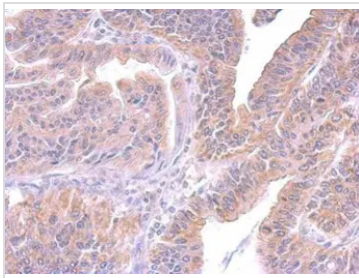
For full product information, images and publications, please visit our [website](#).

## DATA IMAGES



### GTX628260 WB Image

Non-transfected (–) and transfected (+) HeLa whole cell extracts (30 µg) were separated by 7.5% SDS-PAGE, and the membrane was blotted with SUPV3L1 antibody [GT244] (GTX628260) diluted at 1:500.



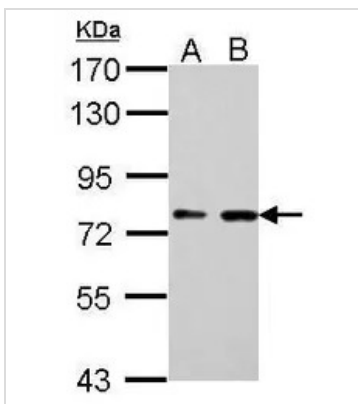
### GTX628260 IHC-P Image

SUPV3L1 antibody [GT244] detects SUV3 protein at cytosol on human gastric cancer by immunohistochemical analysis.

Sample: Paraffin-embedded gastric cancer.

SUPV3L1 antibody [GT244] (GTX628260) dilution: 1:200.

Antigen Retrieval: Trilogy™ (EDTA based, pH 8.0) buffer, 15min



### GTX628260 WB Image

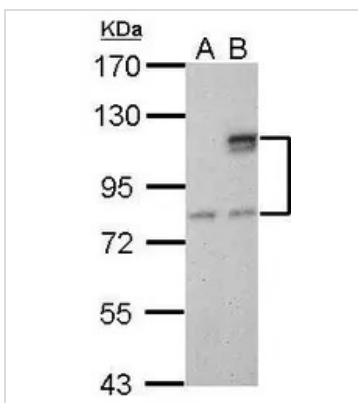
SUPV3L1 antibody [GT0003] detects SUV3 protein by Western blot analysis.

A. 30 µg H1299 whole cell lysate/extract

B. 30 µg HCT116 whole cell lysate/extract

7.5 % SDS-PAGE

SUPV3L1 antibody [GT0003] (GTX628260) dilution: 1:1000



### GTX628260 WB Image

SUPV3L1 antibody [GT0003] detects SUV3 protein by Western blot analysis.

A. 30 µg HeLa whole cell lysate/extract

B. 30 µg whole cell lysate/extract of GFP-human SUV3-transfected HeLa cells

7.5 % SDS-PAGE

SUPV3L1 antibody [GT0003] (GTX628260) dilution: 1:5000



For full product information, images and publications, please visit our [website](http://www.genetex.com).