

## CD20 antibody [GT0008]

Cat. No. GTX628420

Host	Mouse
Clonality	Monoclonal
Isotype	IgG2a
Applications	FCM
Reactivity	Human

Package  
100 µl, 25 µl

## Applications

## Application Note

\*Optimal dilutions/concentrations should be determined by the researcher.

Suggested dilution	Recommended dilution
FCM	1:50-1:200

Not tested in other applications.

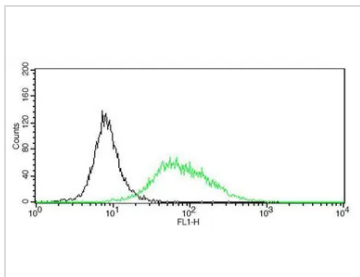
## Properties

Form	Liquid
Buffer	PBS
Preservative	No preservatives
Storage	Store as concentrated solution. Centrifuge briefly prior to opening vial. For short-term storage (1-2 weeks), store at 4°C. For long-term storage, aliquot and store at -20°C or below. Avoid multiple freeze-thaw cycles.
Concentration	0.99 mg/ml (Please refer to the vial label for the specific concentration.)
Immunogen	The immunogen used to generate this antibody corresponds to human CD20
Purification	Affinity purified by Protein G. From tissue culture supernatant
Conjugation	Unconjugated
Note	<p>For laboratory research use only. Not for any clinical, therapeutic, or diagnostic use in humans or animals. Not for animal or human consumption.</p> <p>Purchasers shall not, and agree not to enable third parties to, analyze, copy, reverse engineer or otherwise attempt to determine the structure or sequence of the product.</p>



For full product information, images and publications, please visit our [website](#).

## DATA IMAGES



### GTX628420 FCM Image

CD20 antibody detects CD20 protein by flow cytometry analysis.

Sample: Raji cell fixed in 4% paraformaldehyde at 4oC for 5 min.

Black: Isotype control (ab97244) dilution: 1:100.

Green: CD20 antibody (GTX628420) dilution: 1:100.



For full product information, images and publications, please visit our [website](#).