

## c-Myc antibody [GT168]

Cat. No. GTX628459

Host	Mouse
Clonality	Monoclonal
Isotype	IgG1
Applications	WB, IHC-P, FCM, IP
Reactivity	Human

References ( 3 )

★★★★☆ Review ( 2 )

Package

100 µl, 25 µl

## Applications

## Application Note

\*Optimal dilutions/concentrations should be determined by the researcher.

Suggested dilution	Recommended dilution
WB	1:500-1:3000
IHC-P	1:100-1:1000
FCM	1:50-1:200
IP	1:100-1:500

Not tested in other applications.

Calculated MW 49 kDa. ( [Note](#) )

## Properties

Form	Liquid
Buffer	PBS
Preservative	No preservative
Storage	Store as concentrated solution. Centrifuge briefly prior to opening vial. For short-term storage (1-2 weeks), store at 4°C. For long-term storage, aliquot and store at -20°C or below. Avoid multiple freeze-thaw cycles.
Concentration	1 mg/ml (Please refer to the vial label for the specific concentration.)
Immunogen	The immunogen used to generate this antibody corresponds to human c-Myc
Purification	Affinity purified by Protein G.
Conjugation	Unconjugated

## Note

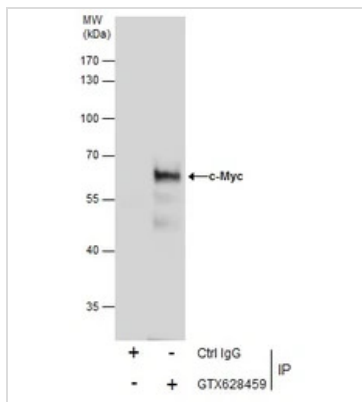
For laboratory research use only. Not for any clinical, therapeutic, or diagnostic use in humans or animals. Not for animal or human consumption.

Purchasers shall not, and agree not to enable third parties to, analyze, copy, reverse engineer or otherwise attempt to determine the structure or sequence of the product.



For full product information, images and publications, please visit our [website](#).

## DATA IMAGES

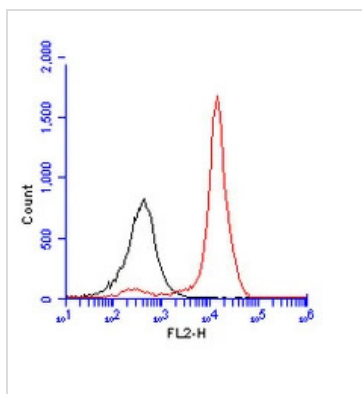


### GTX628459 IP Image

Immunoprecipitation of c-Myc protein from HeLa nuclear extracts using 5 µg of c-Myc antibody [GT168] (GTX628459).

Western blot analysis was performed using c-Myc antibody [GT168] (GTX628459).

EasyBlot anti-Mouse IgG (GTX221667-01) was used as a secondary reagent.



### GTX628459 FCM Image

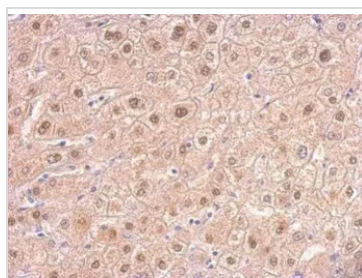
c-Myc antibody [GT168] (GTX628459) detects c-Myc protein by flow cytometry analysis.

Sample: NT2D1 cell fixed in 4% paraformaldehyde for 15 min on ice.

Black: Unlabelled sample was also used as a control.

Red: c-Myc antibody [GT168] (GTX628459) dilution: 1:50.

Acquisition of >20,000 events were collected using Argon ion laser (488nm) and 525/30 bandpass filter.



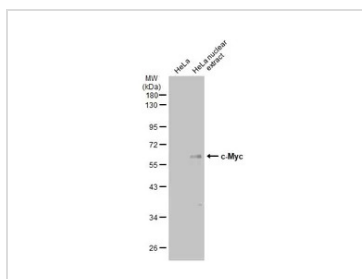
### GTX628459 IHC-P Image

c-Myc antibody [GT168] detects Myc protein at nucleus on human hepatoma by immunohistochemical analysis.

Sample: Paraffin-embedded hepatoma.

c-Myc antibody [GT168] (GTX628459) dilution: 1:200.

Antigen Retrieval: Trilogy™ (EDTA based, pH 8.0) buffer, 15min



### GTX628459 WB Image

HeLa whole cell and nuclear extracts (30 µg) were separated by 10% SDS-PAGE, and the membrane was blotted with c-Myc antibody [GT168] (GTX628459) diluted at 1:500. The HRP-conjugated anti-mouse IgG antibody (GTX213111-01) was used to detect the primary antibody.



For full product information, images and publications, please visit our [website](https://www.genetex.com).