

Mouse Anti-Rat IgG (Heavy chain) antibody [GT782] (HRP)

Cat. No. GTX628460-01

Host	Mouse
Clonality	Monoclonal
Isotype	IgG1
Application	WB
Reactivity	Rat

Package
250 µl

APPLICATION

Application Note

*Optimal dilutions/concentrations should be determined by the researcher.

Suggested dilution	Recommended dilution
WB	1:1000-1:10000

Not tested in other applications.

PROPERTIES

Form	Liquid
Buffer	0.05M Tris, 0.15M NaCl, 1%BSA
Preservative	0.025% ProClin 300
Storage	Store as concentrated solution. Centrifuge briefly prior to opening vial. For short-term storage (1-2 weeks), store at 4°C. For long-term storage, aliquot and store at -20°C or below. Avoid multiple freeze-thaw cycles.
Concentration	2.28 mg/ml (Please refer to the vial label for the specific concentration.)
Purification	Affinity purified by Protein G.
Conjugation	Horseradish peroxidase(HRP)

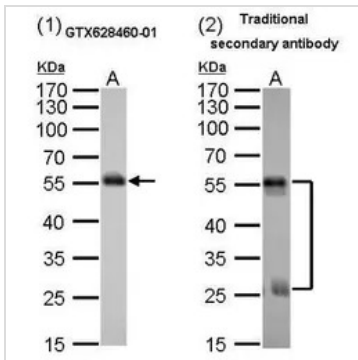
Note

For laboratory research use only. Not for any clinical, therapeutic, or diagnostic use in humans or animals. Not for animal or human consumption.

Purchasers shall not, and agree not to enable third parties to, analyze, copy, reverse engineer or otherwise attempt to determine the structure or sequence of the product.



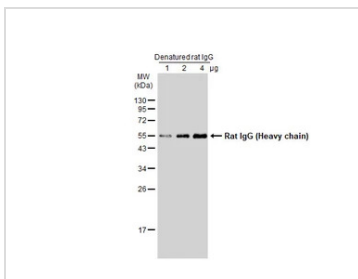
For full product information, images and publications, please visit our [website](#).

DATA IMAGES

GTX628460-01 WB Image

Mouse anti-Rat heavy chain antibody

Comparison of western blot analysis with mouse anti-Rat heavy chain antibody (GTX628460-01 diluted at 1:5000) (1) and traditional secondary antibody (GTX224125-01 diluted at 1:5000) (2).

A. 2 μ g denature rat IgG


GTX628460-01 WB Image

Denatured rat IgG were separated by 12% SDS-PAGE, and the membrane was blotted with Rat IgG (Heavy chain) antibody [GT782] (HRP) (GTX628460-01) diluted at 1:1000.



For full product information, images and publications, please visit our [website](https://www.genetex.com).