

# Mouse Anti-Rat IgG (Light chain) antibody [GT569] (HRP)

**Cat. No. GTX628461-01**

<b>Host</b>	Mouse
<b>Clonality</b>	Monoclonal
<b>Isotype</b>	IgG1
<b>Applications</b>	WB
<b>Reactivity</b>	Rat

References ( 1 )

Package

250 µl

## Applications

### Application Note

\*Optimal dilutions/concentrations should be determined by the researcher.

Suggested dilution	Recommended dilution
WB	1:500-1:3000

Not tested in other applications.

## Properties

<b>Form</b>	Liquid
<b>Buffer</b>	0.05M Tris, 0.15M NaCl, 1%BSA
<b>Preservative</b>	0.025% ProClin 300
<b>Storage</b>	Store as concentrated solution. Centrifuge briefly prior to opening vial. For short-term storage (1-2 weeks), store at 4°C. For long-term storage, aliquot and store at -20°C or below. Avoid multiple freeze-thaw cycles.
<b>Concentration</b>	0.22 mg/ml (Please refer to the vial label for the specific concentration.)
<b>Purification</b>	Affinity purified by Protein G.
<b>Conjugation</b>	Horseradish peroxidase(HRP)

### Note

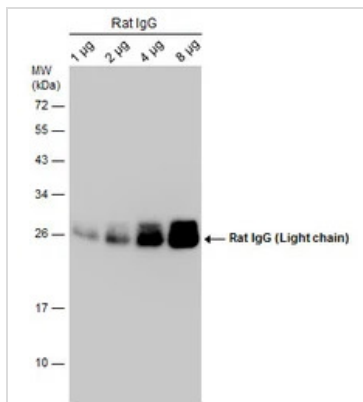
For laboratory research use only. Not for any clinical, therapeutic, or diagnostic use in humans or animals. Not for animal or human consumption.

Purchasers shall not, and agree not to enable third parties to, analyze, copy, reverse engineer or otherwise attempt to determine the structure or sequence of the product.



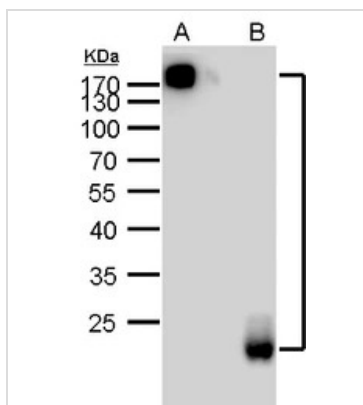
For full product information, images and publications, please visit our [website](#).

DATA IMAGES



**GTX628461-01 WB Image**

Rat IgG were separated by 12% SDS-PAGE, and the membrane was blotted with Rat IgG (Light chain) antibody [GT569] (HRP) (GTX628461-01) diluted at 1:1000.



**GTX628461-01 WB Image**

Mouse anti-Rat IgG (light chain) antibody [GT569] (HRP) detects Rat IgG (light chain) protein by Western blot analysis.

A. 0.4 µg native rat IgG

B. 8 µg denature rat IgG

10 % SDS-PAGE

Mouse anti-Rat IgG (light chain) antibody [GT569] (HRP) (GTX628461-01) dilution: 1:1000



For full product information, images and publications, please visit our [website](#).