

CD3 antibody [GT0013]

Cat. No. GTX628462

Host	Mouse
Clonality	Monoclonal
Isotype	IgG2a
Applications	ICC/IF, FCM
Reactivity	Human, Mouse

References (2)

★★★★☆ Review (1)

Package

100 µl, 25 µl

Applications

Application Note

*Optimal dilutions/concentrations should be determined by the researcher.

Suggested dilution	Recommended dilution
ICC/IF	1:100-1:1000
FCM	1:50-1:200

Not tested in other applications.

Product Note This antibody recognizes the CD3 epsilon subunit.

Properties

Form	Liquid
Buffer	PBS
Preservative	No preservatives
Storage	Store as concentrated solution. Centrifuge briefly prior to opening vial. For short-term storage (1-2 weeks), store at 4°C. For long-term storage, aliquot and store at -20°C or below. Avoid multiple freeze-thaw cycles.
Concentration	1 mg/ml (Please refer to the vial label for the specific concentration.)
Immunogen	The immunogen used to generate this antibody corresponds to human CD3
Purification	Affinity purified by Protein G. From tissue culture supernatant
Conjugation	Unconjugated

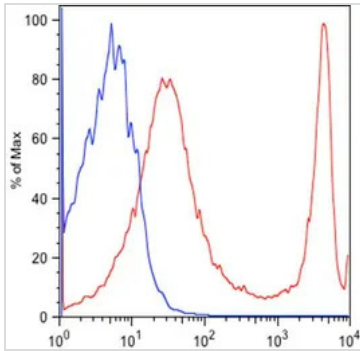
Note For laboratory research use only. Not for any clinical, therapeutic, or diagnostic use in humans or animals. Not for animal or human consumption.

Purchasers shall not, and agree not to enable third parties to, analyze, copy, reverse engineer or otherwise attempt to determine the structure or sequence of the product.



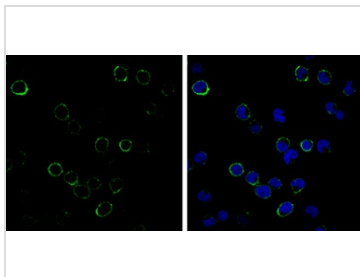
For full product information, images and publications, please visit our [website](#).

DATA IMAGES



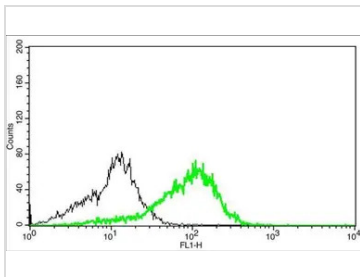
GTX628462 FCM Image

CD3 antibody [GT0013] detects CD3 protein by flow cytometry analysis. Sample: B6 / spleen Blue: Isotype control (anti-mouse IgG-FITC) dilution: 1:300 Red: CD3 antibody [GT0013] (GTX628462) dilution: 1:50.



GTX628462 ICC/IF Image

CD3 antibody [GT0013] detects CD3 protein at cell membrane by immunofluorescent analysis. Sample: Jurkat cells were fixed in 4% paraformaldehyde at RT for 15 min. Green: CD3 protein stained by CD3 antibody [GT0013] (GTX628462) diluted at 1:200. Blue: Hoechst 33342 staining.



GTX628462 FCM Image

CD3 antibody [GT0013] detects CD3 protein by flow cytometry analysis. Sample: Jurkat cell fixed in 4% paraformaldehyde at 4oC for 5 min. Black: Isotype control (ab18449) dilution: 1:50. Green: CD3 antibody [GT0013] (GTX628462) dilution: 1:50.



For full product information, images and publications, please visit our [website](https://www.genetex.com).