

HIF1 alpha antibody [GT10211]

Cat. No. GTX628480

| | |
|--------------|--|
| Host | Mouse |
| Clonality | Monoclonal |
| Isotype | IgG2a |
| Applications | WB, ICC/IF, IHC-P, IP, IHC-P (cell pellet) |
| Reactivity | Human, Rat |

References (15)

★★★★★ Review (3)

Package

100 µl, 25 µl

Applications

Application Note

*Optimal dilutions/concentrations should be determined by the researcher.

| Suggested dilution | Recommended dilution |
|---------------------|----------------------|
| WB | 1:100-1:3000 |
| ICC/IF | 1:100-1:1000 |
| IHC-P | Assay dependent |
| IP | 1:100-1:500 |
| IHC-P (cell pellet) | Assay dependent |

Not tested in other applications.

Calculated MW 93 kDa. ([Note](#))

Properties

| | |
|---------------|--|
| Form | Liquid |
| Buffer | PBS, 20% Glycerol |
| Preservative | No Preservative |
| Storage | Store as concentrated solution. Centrifuge briefly prior to opening vial. For short-term storage (1-2 weeks), store at 4°C. For long-term storage, aliquot and store at -20°C or below. Avoid multiple freeze-thaw cycles. |
| Concentration | 1 mg/ml (Please refer to the vial label for the specific concentration.) |
| Immunogen | The immunogen used to generate this antibody corresponds to human HIF1 alpha |
| Purification | Affinity purified by Protein G. |
| Conjugation | Unconjugated |

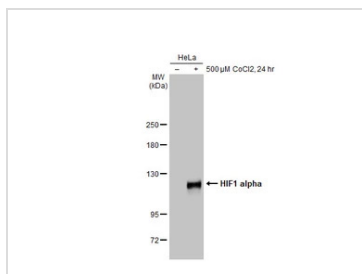
For full product information, images and publications, please visit our [website](#).

For laboratory research use only. Not for any clinical, therapeutic, or diagnostic use in humans or animals. Not for animal or human consumption.

Note

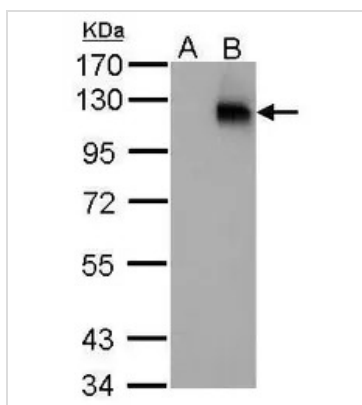
Purchasers shall not, and agree not to enable third parties to, analyze, copy, reverse engineer or otherwise attempt to determine the structure or sequence of the product.

DATA IMAGES



GTX628480 WB Image

Untreated (–) and treated (+) HeLa whole cell extracts (30 μg) were separated by 5% SDS-PAGE, and the membrane was blotted with HIF1 alpha antibody [GT10211] (GTX628480) diluted at 1:1000. The HRP-conjugated anti-mouse IgG antibody (GTX213111-01) was used to detect the primary antibody.



GTX628480 WB Image

HIF1 alpha antibody [GT10211] detects HIF1A protein by western blot analysis.

A. 30 μg HepG2 whole cell lysate/extract (untreated)

B. 30 μg HepG2 whole cell lysate/extract (1% O₂ treatment for 48hr)

7.5% SDS-PAGE

HIF1 alpha antibody [GT10211] (GTX628480) dilution: 1:250

The HRP-conjugated anti-mouse IgG antibody (GTX213111-01) was used to detect the primary antibody.



For full product information, images and publications, please visit our [website](https://www.genetex.com).