

## IDH2 antibody [GT673]

Cat. No. GTX628487

Host	Mouse
Clonality	Monoclonal
Isotype	IgG1
Applications	WB, ICC/IF, IHC-P
Reactivity	Human, Mouse, Rat

References ( 1 )

Package

100 µl, 25 µl

## Applications

## Application Note

\*Optimal dilutions/concentrations should be determined by the researcher.

Suggested dilution	Recommended dilution
WB	1:500-1:3000
ICC/IF	1:100-1:1000
IHC-P	1:100-1:1000

Not tested in other applications.

Calculated MW 51 kDa. ( [Note](#) )

## Properties

Form	Liquid
Buffer	PBS
Preservative	No preservative
Storage	Store as concentrated solution. Centrifuge briefly prior to opening vial. For short-term storage (1-2 weeks), store at 4°C. For long-term storage, aliquot and store at -20°C or below. Avoid multiple freeze-thaw cycles.
Concentration	1 mg/ml (Please refer to the vial label for the specific concentration.)
Immunogen	Recombinant protein encompassing a sequence within the center region of human IDH2. The exact sequence is proprietary.
Purification	Affinity purified by Protein G.
Conjugation	Unconjugated

## Note

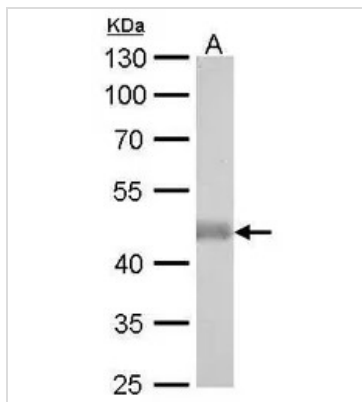
For laboratory research use only. Not for any clinical, therapeutic, or diagnostic use in humans or animals. Not for animal or human consumption.

Purchasers shall not, and agree not to enable third parties to, analyze, copy, reverse engineer or otherwise attempt to determine the structure or sequence of the product.



For full product information, images and publications, please visit our [website](#).

DATA IMAGES



**GTX628487 WB Image**

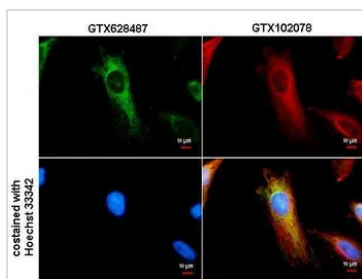
IDH2 antibody [GT673] detects IDH2 protein by western blot analysis.

A. 50 µg mouse brain lysate/extract

10% SDS-PAGE

IDH2 antibody [GT673] (GTX628487) dilution: 1:1000

The HRP-conjugated anti-mouse IgG antibody (GTX213111-01) was used to detect the primary antibody.



**GTX628487 ICC/IF Image**

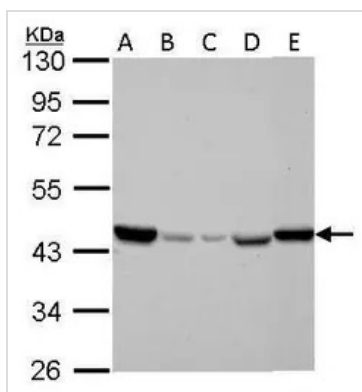
IDH2 antibody detects IDH2 protein at Mitochondria by immunofluorescent analysis.

Sample: HeLa cells were fixed in 4% paraformaldehyde/PBS for 15 min.

Green: IDH2 protein stained by IDH2 antibody (GTX628487) diluted at 1:500.

Red: alpha Tubulin protein stained by alpha Tubulin antibody (GTX102078) diluted at 1:500.

Blue: Hoechst 33342 staining.



**GTX628487 WB Image**

IDH2 antibody detects IDH2 protein by western blot analysis.

A. 30 µg Jurkat whole cell lysate/extract

B. 30 µg Raji whole cell lysate/extract

C. 30 µg K562 whole cell lysate/extract

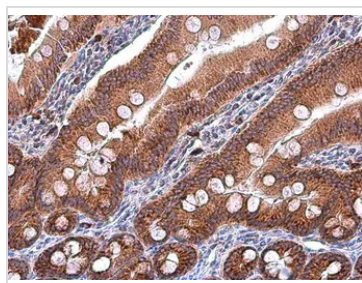
D. 30 µg THP-1 whole cell lysate/extract

E. 30 µg NCI-H929 whole cell lysate/extract

10% SDS-PAGE

IDH2 antibody (GTX628487) dilution: 1:1000

The HRP-conjugated anti-mouse IgG antibody (GTX213111-01) was used to detect the primary antibody.



**GTX628487 IHC-P Image**

IDH2 antibody [GT673] detects IDH2 protein at cytoplasm in rat duodenum by immunohistochemical analysis.

Sample: Paraffin-embedded rat duodenum.

IDH2 antibody [GT673] (GTX628487) diluted at 1:500.

Antigen Retrieval: Citrate buffer, pH 6.0, 15 min



For full product information, images and publications, please visit our [website](https://www.genetex.com).