

PRMT5 antibody [GT3610]

Cat. No. GTX628488

Host	Mouse
Clonality	Monoclonal
Isotype	IgG2a
Application	WB, IP
Reactivity	Human, Rat

Reference (1)
Package
100 µl, 25 µl

APPLICATION

Application Note

*Optimal dilutions/concentrations should be determined by the researcher.

Suggested dilution	Recommended dilution
WB	1:500-1:3000
IP	1:100-1:500

Not tested in other applications.

Calculated MW 73 kDa. ([Note](#))

PROPERTIES

Form	Liquid
Buffer	PBS
Preservative	No preservative
Storage	Store as concentrated solution. Centrifuge briefly prior to opening vial. For short-term storage (1-2 weeks), store at 4°C. For long-term storage, aliquot and store at -20°C or below. Avoid multiple freeze-thaw cycles.
Concentration	1 mg/ml (Please refer to the vial label for the specific concentration.)
Immunogen	Recombinant protein encompassing a sequence within the center region of human PRMT5. The exact sequence is proprietary.
Purification	Affinity purified by Protein G.
Conjugation	Unconjugated

Note

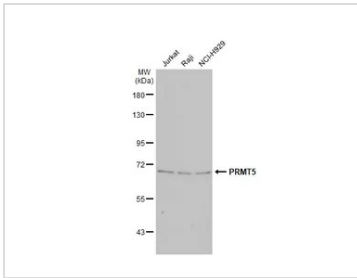
For laboratory research use only. Not for any clinical, therapeutic, or diagnostic use in humans or animals. Not for animal or human consumption.

Purchasers shall not, and agree not to enable third parties to, analyze, copy, reverse engineer or otherwise attempt to determine the structure or sequence of the product.



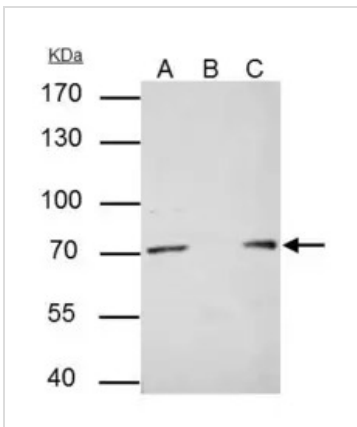
For full product information, images and publications, please visit our [website](#).

DATA IMAGES



GTX628488 WB Image

Various whole cell extracts (30 µg) were separated by 7.5% SDS-PAGE, and the membrane was blotted with PRMT5 antibody [GT3610] (GTX628488) diluted at 1:1000. The HRP-conjugated anti-mouse IgG antibody (GTX213111-01) was used to detect the primary antibody, and the signal was developed with Trident ECL plus-Enhanced.



GTX628488 IP Image

PRMT5 antibody [GT3610] immunoprecipitates PRMT5 protein in IP experiments.

IP samples: Raji whole cell extract

A. 35 µg Raji whole cell extract

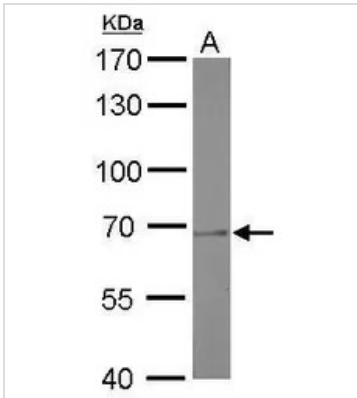
B. Control with 4 µg of preimmune Rabbit IgG

C. Immunoprecipitation of PRMT5 protein by 4 µg PRMT5 antibody [GT3610] (GTX628488)

7.5 % SDS-PAGE

The immunoprecipitated PRMT5 protein was detected by PRMT5 antibody [GT3610] (GTX628488) diluted at 1:500.

[EasyBlot anti-rabbit IgG (GTX221666-01) was used as a secondary reagent]



GTX628488 WB Image

PRMT5 antibody [GT3610] detects PRMT5 protein by western blot analysis.

A. 50 µg rat kidney lysate/extract

7.5% SDS-PAGE

PRMT5 antibody [GT3610] (GTX628488) dilution: 1:1000

The HRP-conjugated anti-mouse IgG antibody (GTX213111-01) was used to detect the primary antibody.



For full product information, images and publications, please visit our [website](https://www.genetex.com).