

# HA tag antibody [GT423]

**Cat. No. GTX628489**

<b>Host</b>	Mouse
<b>Clonality</b>	Monoclonal
<b>Isotype</b>	IgG2b
<b>Applications</b>	WB, ICC/IF, IP
<b>Reactivity</b>	Species independent

References ( 13 )

★ ★ ★ ★ ★ Review ( 1 )

Package

100 µl, 25 µl

## Applications

### Application Note

\*Optimal dilutions/concentrations should be determined by the researcher.

Suggested dilution	Recommended dilution
WB	1:1000-1:10000
ICC/IF	1:100-1:2000
IP	1:100-1:500

Not tested in other applications.

## Properties

<b>Form</b>	Liquid
<b>Buffer</b>	PBS
<b>Preservative</b>	No preservative
<b>Storage</b>	Store as concentrated solution. Centrifuge briefly prior to opening vial. For short-term storage (1-2 weeks), store at 4°C. For long-term storage, aliquot and store at -20°C or below. Avoid multiple freeze-thaw cycles.
<b>Concentration</b>	1 mg/ml (Please refer to the vial label for the specific concentration.)
<b>Immunogen</b>	The immunogen used to generate this antibody corresponds to HA tag
<b>Purification</b>	Affinity purified by Protein G.
<b>Conjugation</b>	Unconjugated

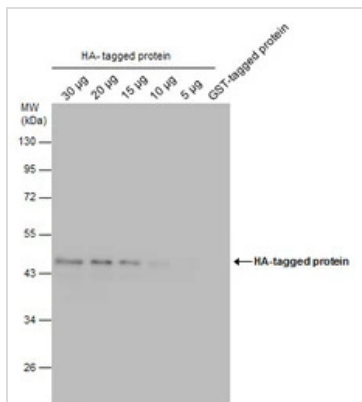
### Note

For laboratory research use only. Not for any clinical, therapeutic, or diagnostic use in humans or animals. Not for animal or human consumption.

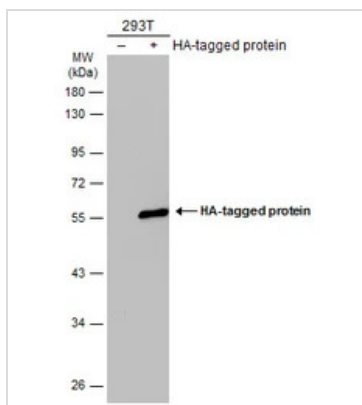
Purchasers shall not, and agree not to enable third parties to, analyze, copy, reverse engineer or otherwise attempt to determine the structure or sequence of the product.



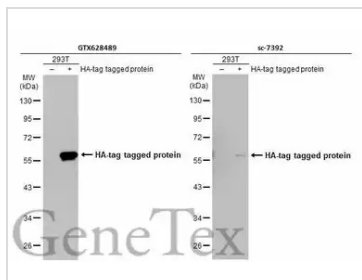
For full product information, images and publications, please visit our [website](#).

**DATA IMAGES**

**GTX628489 WB Image**

HA tag antibody [GT423] detects HA tag protein by western blot analysis. HA tag-transfected and GST tag-transfected (30 µg) 293T whole cell extracts were separated by 10% SDS-PAGE, and the membrane was blotted with HA tag antibody [GT423] (GTX628489) diluted at 1:5000. The HRP-conjugated anti-mouse IgG antibody (GTX213111-01) was used to detect the primary antibody.

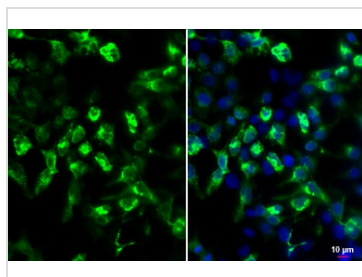

**GTX628489 WB Image**

Non-transfected (-) and transfected (+) 293T whole cell extracts (30 µg) were separated by 10% SDS-PAGE, and the membrane was blotted with HA tag antibody [GT423] (GTX628489) diluted at 1:5000. The HRP-conjugated anti-mouse IgG antibody (GTX213111-01) was used to detect the primary antibody.


**GTX628489 WB Image**

Non-transfected (-) and transfected (+) 293T whole cell extracts (30 µg) were separated by 10% SDS-PAGE, and the membranes were blotted with HA tag antibody [GT423] (GTX628489) diluted at 1:5000 and competitor's antibody (sc-7392) diluted at 1:5000. The HRP-conjugated anti-mouse IgG antibody (GTX213111-01) was used to detect the primary antibody.

\*The competitor is not affiliated with GeneTex and does not endorse this product.


**GTX628489 ICC/IF Image**

HA tag antibody [GT423] detects HA protein by immunofluorescent analysis.

Sample: HA-tag tagged protein transfected 293T cells were fixed in 4% paraformaldehyde at RT for 15 min.

Green: HA stained by HA tag antibody [GT423] (GTX628489) diluted at 1:2000.

Blue: Hoechst 33342 staining.



For full product information, images and publications, please visit our [website](https://www.genetex.com).