

CD45RA antibody [GT0014]

Cat. No. GTX628507

Host	Mouse
Clonality	Monoclonal
Isotype	IgG1
Applications	WB, ICC/IF, IHC-P, FCM
Reactivity	Human, Rabbit

References (6)

Package

100 µl, 25 µl

Applications

Application Note

*Optimal dilutions/concentrations should be determined by the researcher.

Suggested dilution	Recommended dilution
WB	1:500-1:3000
ICC/IF	1:100-1:1000
IHC-P	Assay dependent
FCM	1:1:50-1:200

Not tested in other applications.

Observed MW (kDa) 200, 260 kDa.

Properties

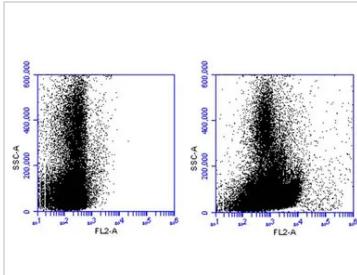
Form	Liquid
Buffer	PBS
Preservative	No preservatives
Storage	Store as concentrated solution. Centrifuge briefly prior to opening vial. For short-term storage (1-2 weeks), store at 4°C. For long-term storage, aliquot and store at -20°C or below. Avoid multiple freeze-thaw cycles.
Concentration	1 mg/ml (Please refer to the vial label for the specific concentration.)
Immunogen	The immunogen used to generate this antibody corresponds to human CD45RA
Purification	Affinity purified by Protein G. From tissue culture supernatant
Conjugation	Unconjugated

For full product information, images and publications, please visit our [website](#).

For laboratory research use only. Not for any clinical, therapeutic, or diagnostic use in humans or animals. Not for animal or human consumption.

Note

Purchasers shall not, and agree not to enable third parties to, analyze, copy, reverse engineer or otherwise attempt to determine the structure or sequence of the product.

DATA IMAGES

GTX628507 FCM Image

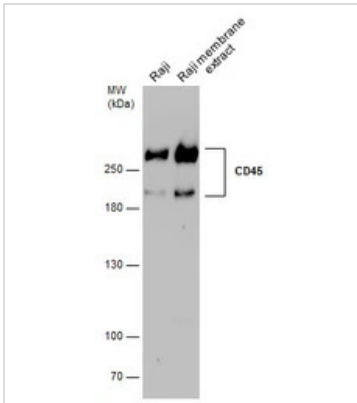
CD45RA antibody [GT0014] (GTX628507) detects CD45RA protein by flow cytometry analysis.

Sample: mouse splenocytes cell.

Left: Unlabelled sample was used as a control.

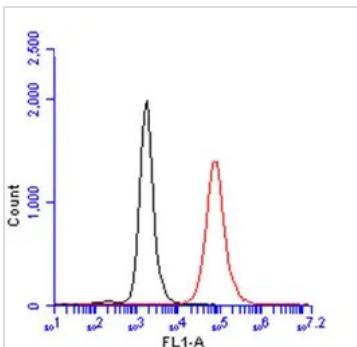
Right: CD45RA antibody [GT0014] (GTX628507) dilution: 1:50.

Acquisition of 40,000 events were collected for FACS analysis.


GTX628507 WB Image

Raji whole cell and membrane extracts (30 µg) were separated by 5% SDS-PAGE, and the membrane was blotted with CD45RA antibody [GT0014] (GTX628507) diluted at 1:1000.

The observed M.W. is based on the publication: [PMID: 24405902](https://pubmed.ncbi.nlm.nih.gov/24405902/)


GTX628507 FCM Image

CD45RA antibody [GT0014] (GTX628507) detects CD45RA protein by flow cytometry analysis.

Sample: THP-1 cell.

Black: Unlabelled sample was used as a control.

Red: CD45RA antibody [GT0014] (GTX628507) dilution: 1:50.

Acquisition of 20,000 events were collected for FACS analysis.



For full product information, images and publications, please visit our [website](https://www.genetex.com).