

# GFP antibody [GT859]

**Cat. No. GTX628528**

<b>Host</b>	Mouse
<b>Clonality</b>	Monoclonal
<b>Isotype</b>	IgG2b
<b>Applications</b>	WB, ICC/IF, IHC-P, IHC-Fr, IHC-Wm, IP, ELISA, Sandwich ELISA
<b>Reactivity</b>	Species independent

References ( 32 )

Package

100 µl, 25 µl

## Applications

### Application Note

\*Optimal dilutions/concentrations should be determined by the researcher.

Suggested dilution	Recommended dilution
WB	1:1000-1:10000
ICC/IF	1:100-1:2000
IHC-P	Assay dependent
IHC-Fr	Assay dependent
IHC-Wm	Assay dependent
IP	1:100-1:500
ELISA	1:1000-1:10000
Sandwich ELISA	Assay dependent

**Note : Capture: GTX628528 , Detection: GTX113617**

Not tested in other applications.

**Product Note** This antibody reacts with GFP variants including GFP, EGFP, and YFP.

## Properties

<b>Form</b>	Liquid
<b>Buffer</b>	PBS
<b>Preservative</b>	No preservatives
<b>Storage</b>	Store as concentrated solution. Centrifuge briefly prior to opening vial. For short-term storage (1-2 weeks), store at 4°C. For long-term storage, aliquot and store at -20°C or below. Avoid multiple freeze-thaw cycles.
<b>Concentration</b>	0.25 mg/ml (Please refer to the vial label for the specific concentration.)
<b>Immunogen</b>	Full length GFP recombinant protein



For full product information, images and publications, please visit our [website](#).

**Purification** Affinity purified by Protein A.  
From tissue culture supernatant

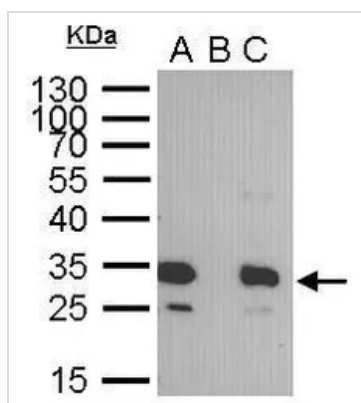
**Conjugation** Unconjugated

**Note**

For laboratory research use only. Not for any clinical, therapeutic, or diagnostic use in humans or animals. Not for animal or human consumption.

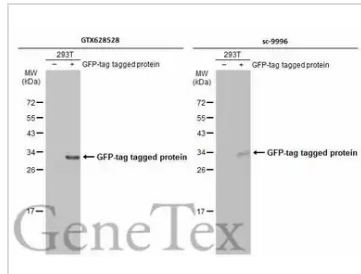
Purchasers shall not, and agree not to enable third parties to, analyze, copy, reverse engineer or otherwise attempt to determine the structure or sequence of the product.

DATA IMAGES



**GTX628528 IP Image**

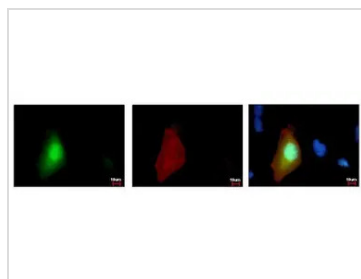
GFP tag antibody immunoprecipitates GFP-fused protein in IP experiments. IP Sample: 400 µg cell lysate/extract of GFP-fused gene transfected 293T cells A. 30 µg lysate/extract of transfected 293T cell B. Control with 2 µg of preimmune mouse IgG C. Immunoprecipitation of GFP-fused protein by 2 µg of GFP tag antibody (GTX628528) 12% SDS-PAGE The immunoprecipitated GFP-fused protein was detected by GFP tag antibody (GTX628528) diluted at 1:1000. EasyBlot anti-mouse IgG (GTX221667-01) was used as a secondary reagent.



**GTX628528 WB Image**

Non-transfected (–) and transfected (+) 293T whole cell extracts (5 µg) were separated by 12% SDS-PAGE, and the membranes were blotted with GFP antibody [GT859] (GTX628528) diluted at 1:5000 and competitor's antibody (sc-9996) diluted at 1:5000. The HRP-conjugated anti-mouse IgG antibody (GTX213111-01) was used to detect the primary antibody.

\*The competitor is not affiliated with GeneTex and does not endorse this product.



**GTX628528 ICC/IF Image**

GFP-tag antibody detects GFP-recombinant protein by immunofluorescent analysis. Sample: GFP-tag transfected HeLa cells were fixed in 4% paraformaldehyde at RT for 15 min. Green: GFP is expressed in the transfected cell Red: GFP-recombinant protein stained by GFP-tag antibody (GTX628528) diluted at 1:2000. Blue: Hoechst 33342 staining.



For full product information, images and publications, please visit our [website](https://www.genetex.com).