

RFP antibody [GT1610]

Cat. No. GTX628545

Host	Mouse
Clonality	Monoclonal
Isotype	IgG2a
Applications	WB, ICC/IF, IP
Reactivity	Species independent

Package
100 µl, 25 µl

Applications

Application Note

*Optimal dilutions/concentrations should be determined by the researcher.

Suggested dilution	Recommended dilution
WB	1:500-1:3000
ICC/IF	1:100-1:1000
IP	1:500-1:1000

Not tested in other applications.

Calculated MW	27 kDa. (Note)
Product Note	This antibody is specific for RFP and does not cross react with GFP.

Properties

Form	Liquid
Buffer	PBS
Preservative	No preservative
Storage	Store as concentrated solution. Centrifuge briefly prior to opening vial. For short-term storage (1-2 weeks), store at 4°C. For long-term storage, aliquot and store at -20°C or below. Avoid multiple freeze-thaw cycles.
Concentration	1.05 mg/ml (Please refer to the vial label for the specific concentration.)
Immunogen	Recombinant protein conjugated synthetic peptide encompassing a sequence within the center region of RFP. The exact sequence is proprietary.
Purification	Affinity purified by Protein G.
Conjugation	Unconjugated

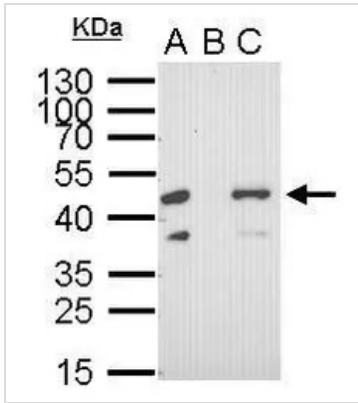


For full product information, images and publications, please visit our [website](#).

For laboratory research use only. Not for any clinical, therapeutic, or diagnostic use in humans or animals. Not for animal or human consumption.

Note

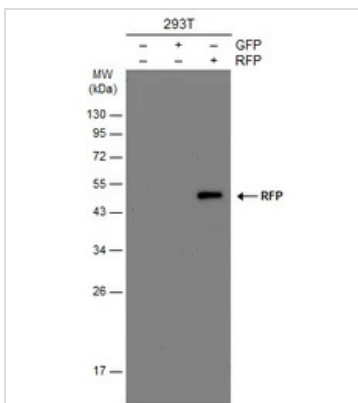
Purchasers shall not, and agree not to enable third parties to, analyze, copy, reverse engineer or otherwise attempt to determine the structure or sequence of the product.

DATA IMAGES

GTx628545 IP Image

RFP tag antibody immunoprecipitates RFP-fused protein in IP experiments. IP Sample: 400 µg cell lysate/extract of RFP-fused gene transfected 293T cells A. 30 µg lysate/extract of transfected 293T cell B. Control with 2 µg of preimmune mouse IgG C. Immunoprecipitation of RFP-fused protein by 2 µg of RFP tag antibody (GTx628545) 12% SDS-PAGE The immunoprecipitated RFP-fused protein was detected by RFP tag antibody (GTx628545) diluted at 1:1000. EasyBlot anti-mouse IgG (GTx221667-01) was used as a secondary reagent.


GTx628545 ICC/IF Image

RFP-tag antibody detects RFP-recombinant protein by immunofluorescent analysis. Sample: RFP-tag transfected HeLa cells were fixed in 4% paraformaldehyde at RT for 15 min. Green: RFP-recombinant protein stained by RFP-tag antibody (GTx628545) diluted at 1:2000. Red: RFP is expressed in the transfected cell. Blue: Hoechst 33342 staining.


GTx628545 WB Image

Non-transfected (-) and transfected (+) 293T whole cell extracts (30 µg) were separated by 12% SDS-PAGE, and the membrane was blotted with RFP antibody [GT1610] (GTx628545) diluted at 1:10000. The HRP-conjugated anti-mouse IgG antibody (GTx213111-01) was used to detect the primary antibody.



For full product information, images and publications, please visit our [website](https://www.genetex.com).