

# Cyclin B1 antibody [GT238]

**Cat. No. GTX628546**

<b>Host</b>	Mouse
<b>Clonality</b>	Monoclonal
<b>Isotype</b>	IgG1
<b>Applications</b>	WB, IHC-P
<b>Reactivity</b>	Human

References ( 1 )

Package

100 µl, 25 µl

## Applications

### Application Note

\*Optimal dilutions/concentrations should be determined by the researcher.

Suggested dilution	Recommended dilution
WB	1:500-1:3000
IHC-P	1:100-1:1000

Not tested in other applications.

**Calculated MW** 48 kDa. ( [Note](#) )

## Properties

<b>Form</b>	Liquid
<b>Buffer</b>	PBS
<b>Preservative</b>	No preservatives
<b>Storage</b>	Store as concentrated solution. Centrifuge briefly prior to opening vial. For short-term storage (1-2 weeks), store at 4°C. For long-term storage, aliquot and store at -20°C or below. Avoid multiple freeze-thaw cycles.
<b>Concentration</b>	1 mg/ml (Please refer to the vial label for the specific concentration.)
<b>Immunogen</b>	Recombinant protein encompassing a sequence within the center region of human Cyclin B1. The exact sequence is proprietary.
<b>Purification</b>	Affinity purified by Protein G.
<b>Conjugation</b>	Unconjugated

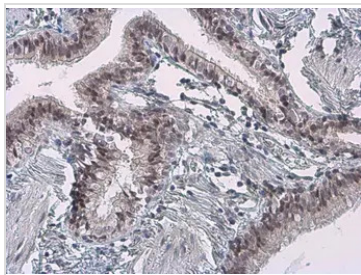
### Note

For laboratory research use only. Not for any clinical, therapeutic, or diagnostic use in humans or animals. Not for animal or human consumption.

Purchasers shall not, and agree not to enable third parties to, analyze, copy, reverse engineer or otherwise attempt to determine the structure or sequence of the product.



For full product information, images and publications, please visit our [website](#).

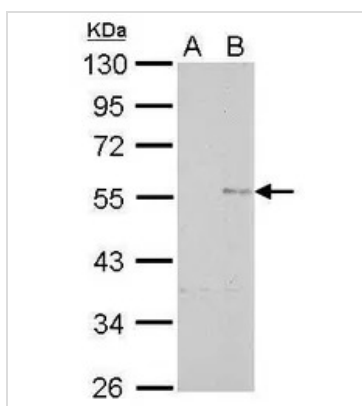
**DATA IMAGES**

**GTx628546 IHC-P Image**

Cyclin B1 antibody [GT238] detects Cyclin B1 protein at cytoplasm and nucleus by immunohistochemical analysis.

Sample: Paraffin-embedded human lung cancer.

Cyclin B1 stained by Cyclin B1 antibody [GT238] (GTx628546) diluted at 1:200.

Antigen Retrieval: Citrate buffer, pH 6.0, 15 min


**GTx628546 WB Image**

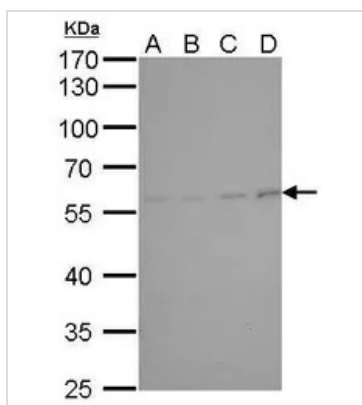
Cyclin B1 antibody [GT238] detects CCNB1 protein by Western blot analysis.

A. 30 µg U2OS whole cell lysate/extract (untreated)

B. 30 µg U2OS whole cell lysate/extract (100ng/ml Nocodazole treatment for 24hr)

10 % SDS-PAGE

Cyclin B1 antibody [GT238] (GTx628546) dilution: 1:1000


**GTx628546 WB Image**

Cyclin B1 antibody [GT238] detects CCNB1 protein by Western blot analysis.

A. 30 µg HeLa whole cell lysate/extract (untreated)

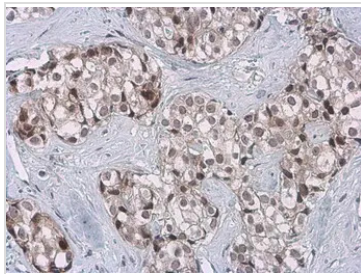
B. 30 µg HeLa whole cell lysate/extract (serum starvation for 48hr)

C. 30 µg HeLa whole cell lysate/extract (2mM thymidine treatment and recovery for 3.5hr)

D. 30 µg HeLa whole cell lysate/extract (2mM thymidine treatment and recovery for 12hr)

10 % SDS-PAGE

Cyclin B1 antibody [GT238] (GTx628546) dilution: 1:500


**GTx628546 IHC-P Image**

Cyclin B1 antibody [GT238] detects Cyclin B1 protein at cytoplasm and nucleus by immunohistochemical analysis.

Sample: Paraffin-embedded human breast carcinoma.

Cyclin B1 stained by Cyclin B1 antibody [GT238] (GTx628546) diluted at 1:200.

Antigen Retrieval: Citrate buffer, pH 6.0, 15 min



For full product information, images and publications, please visit our [website](http://www.genetex.com).