

CBS antibody [GT519]

Cat. No. GTX628777

Host	Mouse
Clonality	Monoclonal
Isotype	IgG1
Application	WB, IHC-P
Reactivity	Human, Mouse, Rat, Zebrafish

Reference (3)

Package

100 µl, 25 µl

APPLICATION

Application Note

*Optimal dilutions/concentrations should be determined by the researcher.

Suggested dilution	Recommended dilution
WB	1:500-1:3000
IHC-P	1:100-1:1000

Not tested in other applications.

Calculated MW 61 kDa. ([Note](#))

PROPERTIES

Form	Liquid
Buffer	PBS
Preservative	No preservative
Storage	Store as concentrated solution. Centrifuge briefly prior to opening vial. For short-term storage (1-2 weeks), store at 4°C. For long-term storage, aliquot and store at -20°C or below. Avoid multiple freeze-thaw cycles.
Concentration	0.97 mg/ml (Please refer to the vial label for the specific concentration.)
Immunogen	Recombinant protein encompassing a sequence within the center region of human CBS. The exact sequence is proprietary.
Purification	Affinity purified by Protein G.
Conjugation	Unconjugated

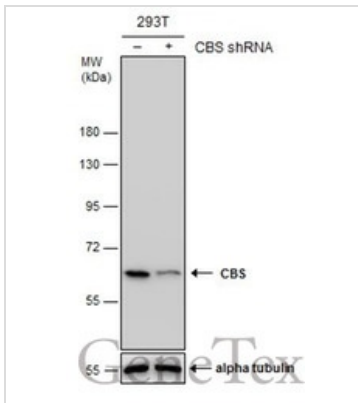
Note

For laboratory research use only. Not for any clinical, therapeutic, or diagnostic use in humans or animals. Not for animal or human consumption.

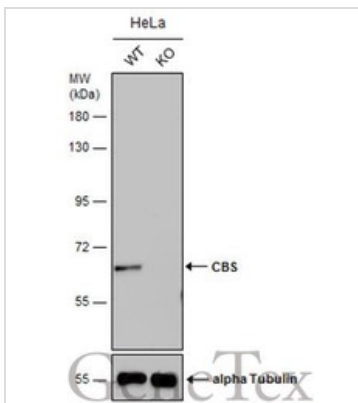
Purchasers shall not, and agree not to enable third parties to, analyze, copy, reverse engineer or otherwise attempt to determine the structure or sequence of the product.



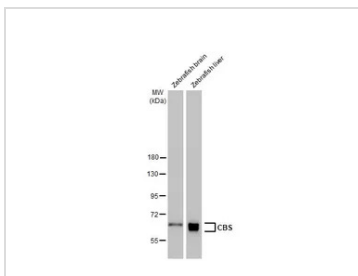
For full product information, images and publications, please visit our [website](#).

DATA IMAGES

GTX628777 WB Image

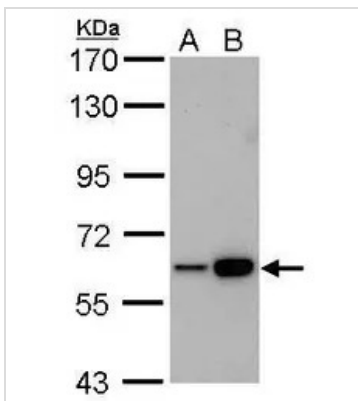
Non-transfected (-) and transfected (+) 293T whole cell extracts (30 µg) were separated by 7.5% SDS-PAGE, and the membrane was blotted with CBS antibody [GT519] (GTX628777) diluted at 1:500.


GTX628777 WB Image

Wild-type (WT) and CBS knockout (KO) HeLa cell extracts (30 µg) were separated by 7.5% SDS-PAGE, and the membrane was blotted with CBS antibody [GT519] (GTX628777) diluted at 1:500. The HRP-conjugated anti-mouse IgG antibody (GTX213111-01) was used to detect the primary antibody.


GTX628777 WB Image

Various tissue extracts (30 µg) were separated by 7.5% SDS-PAGE, and the membrane was blotted with CBS antibody [GT519] (GTX628777) diluted at 1:1000. The HRP-conjugated anti-mouse IgG antibody (GTX213111-01) was used to detect the primary antibody.


GTX628777 WB Image

CBS antibody [GT519] detects CBS protein by Western blot analysis.

A. 30 µg Raji whole cell lysate/extract

B. 30 µg K562 whole cell lysate/extract

7.5 % SDS-PAGE

CBS antibody [GT519] (GTX628777) dilution: 1:1000



For full product information, images and publications, please visit our [website](http://www.genetex.com).