

# Histone H2A.XS139ph (phospho Ser139) antibody [GT2311]

**Cat. No. GTX628789**

<b>Host</b>	Mouse
<b>Clonality</b>	Monoclonal
<b>Isotype</b>	IgG1
<b>Applications</b>	WB, ICC/IF, IHC-P, IP
<b>Reactivity</b>	Human, Mouse, Rat

[References \( 21 \)](#)

**Package**

100 µl, 25 µl

## Applications

### Application Note

\*Optimal dilutions/concentrations should be determined by the researcher.

Suggested dilution	Recommended dilution
WB	1:500-1:3000
ICC/IF	1:100-1:1000
IHC-P	1:100-1:1000
IP	1:100-1:500

Not tested in other applications.

**Calculated MW** 15 kDa. ( [Note](#) )

## Properties

<b>Form</b>	Liquid
<b>Buffer</b>	PBS
<b>Preservative</b>	No preservatives
<b>Storage</b>	Store as concentrated solution. Centrifuge briefly prior to opening vial. For short-term storage (1-2 weeks), store at 4°C. For long-term storage, aliquot and store at -20°C or below. Avoid multiple freeze-thaw cycles.
<b>Concentration</b>	0.92 mg/ml (Please refer to the vial label for the specific concentration.)
<b>Immunogen</b>	Carrier-protein conjugated synthetic peptide surrounding phospho Ser139 of human Histone H2A.X. The exact sequence is proprietary.
<b>Purification</b>	Affinity purified by Protein G.
<b>Conjugation</b>	Unconjugated

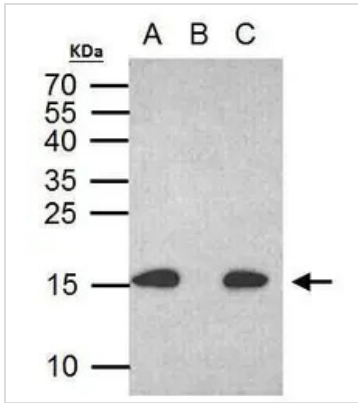


For full product information, images and publications, please visit our [website](#).

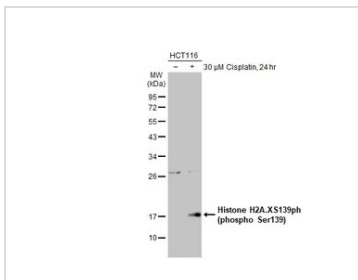
For laboratory research use only. Not for any clinical, therapeutic, or diagnostic use in humans or animals. Not for animal or human consumption.

**Note**

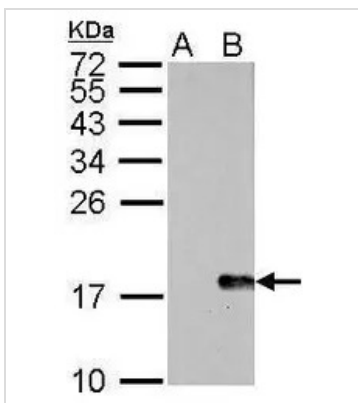
Purchasers shall not, and agree not to enable third parties to, analyze, copy, reverse engineer or otherwise attempt to determine the structure or sequence of the product.

**DATA IMAGES**

**GTX628789 IP Image**

Histone H2A.X (phospho S139) antibody immunoprecipitates histone H2A.X (phospho S139) protein in IP experiments. IP Sample: 500 µg HCT116 with CPT 30 µM treatment 24 hr whole cell lysate/extract A. 30 µg HCT116 whole with CPT 30 uM treatment cell lysate/extract B. Control with 2 µg of preimmune mouse IgG C. Immunoprecipitation of histone H2A.X (phospho S139) protein by 2 µg histone H2A.X (phospho S139) antibody (GTX628789) 15% SDS-PAGE The immunoprecipitated histone H2A.X (phospho S139) protein was detected by Human histone H2A.X (phospho S139) antibody (GTX628789) diluted at 1:1000. EasyBlot anti-mouse IgG (GTX221667-01) was used as a secondary reagent.


**GTX628789 WB Image**

Untreated (-) and treated (+) HCT116 whole cell extracts (30 µg) were separated by 12% SDS-PAGE, and the membrane was blotted with Histone H2A.XS139ph (phospho Ser139) antibody [GT2311] (GTX628789) diluted at 1:1000. The HRP-conjugated anti-mouse IgG antibody (GTX213111-01) was used to detect the primary antibody, and the signal was developed with Trident ECL plus-Enhanced.


**GTX628789 WB Image**

Histone H2A.X (phospho S139) antibody [GT2311] detects H2AFX protein by western blot analysis.

A. 30 µg NIH-3T3 whole cell lysate/extract (untreated)

B. 30 µg NIH-3T3 whole cell lysate/extract (30µM cisplatin treatment for 24hr)

15% SDS-PAGE

Histone H2A.X (phospho S139) antibody [GT2311] (GTX628789) dilution: 1:1000

The HRP-conjugated anti-mouse IgG antibody (GTX213111-01) was used to detect the primary antibody.



For full product information, images and publications, please visit our [website](https://www.genetex.com).