

## alpha Tubulin antibody [GT114]

Cat. No. GTX628802

Host	Mouse
Clonality	Monoclonal
Isotype	IgG2a
Application	WB, ICC/IF, IHC-P, IHC-Fr, FACS
Reactivity	Human, Mouse, Rat, Zebrafish, Goat, Drosophila, Crucian carp

Reference ( 146 )

★★★★☆ Review ( 2 )

Package

100 µl, 25 µl

## PRODUCT

## Summary

alpha Tubulin antibody [GT114] detects alpha Tubulin, a cytoskeletal protein widely expressed in cells that is commonly used as a loading control for western blots. The predicted molecular weight of alpha Tubulin protein is 50 kDa. This is a well-cited mouse monoclonal antibody validated for multiple applications including western blot, immunohistochemistry, and immunocytochemistry.

## APPLICATION

## Application Note

\*Optimal dilutions/concentrations should be determined by the researcher.

Suggested dilution	Recommended dilution
WB	1:500-1:20000
ICC/IF	1:100-1:1000
IHC-P	1:100-1:1000
IHC-Fr	1:100-1:1000
FACS	Assay dependent

Not tested in other applications.

Calculated MW 50 kDa. ( [Note](#) )

## PROPERTIES

Form	Liquid
Buffer	PBS, 20% Glycerol
Preservative	No Preservative
Storage	Store as concentrated solution. Centrifuge briefly prior to opening vial. For short-term storage (1-2 weeks), store at 4°C. For long-term storage, aliquot and store at -20°C or below. Avoid multiple freeze-thaw cycles.
Concentration	1 mg/ml (Please refer to the vial label for the specific concentration.)
Immunogen	Recombinant protein encompassing a sequence within the center region of human alpha Tubulin. The exact sequence is proprietary.



For full product information, images and publications, please visit our [website](#).

Date 2024 / 04 / 27 Page 1 of 2

## Purification

Affinity purified by Protein A.  
From tissue culture supernatant

## Conjugation

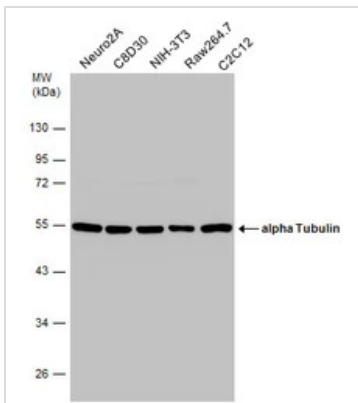
Unconjugated

## Note

For laboratory research use only. Not for any clinical, therapeutic, or diagnostic use in humans or animals. Not for animal or human consumption.

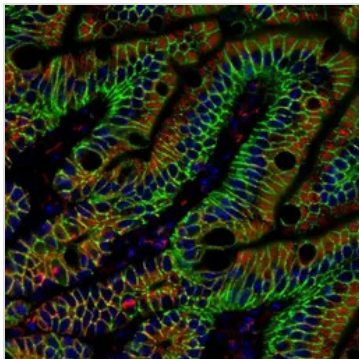
Purchasers shall not, and agree not to enable third parties to, analyze, copy, reverse engineer or otherwise attempt to determine the structure or sequence of the product.

## DATA IMAGES



### GTX628802 WB Image

Various whole cell extracts (30 µg) were separated by 10% SDS-PAGE, and the membrane was blotted with alpha Tubulin antibody [GT114] (GTX628802) diluted at 1:10000. The HRP-conjugated anti-mouse IgG antibody (GTX213111-01) was used to detect the primary antibody.



### GTX628802 IHC-P Image

alpha Tubulin antibody [GT114] detects alpha Tubulin protein at cytoplasm in mouse colon by immunohistochemical analysis.

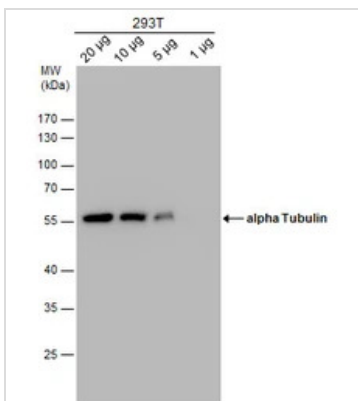
Sample: Paraffin-embedded mouse colon.

Red: alpha Tubulin antibody [GT114] (GTX628802) diluted at 1:500.

Green: beta Catenin antibody [N1N2-2] (GTX101435) diluted at 1:500.

Blue: Hoechst 33342 staining.

Antigen Retrieval: Trilogy™ (EDTA based, pH 8.0) buffer, 15min



### GTX628802 WB Image

alpha Tubulin antibody detects alpha Tubulin protein by western blot analysis. Varied amount of 293T Whole cell extracts was separated by 10% SDS-PAGE, and the membrane was blotted with alpha Tubulin antibody (GTX628802) at a dilution of 1:10000. The HRP-conjugated anti-mouse IgG antibody (GTX213111-01) was used to detect the primary antibody.



For full product information, images and publications, please visit our [website](https://www.genetex.com).