

Lamin B2 antibody [GT144]

Cat. No. GTX628803

Host	Mouse
Clonality	Monoclonal
Isotype	IgG2a
Applications	WB, ICC/IF, IHC-P, IP
Reactivity	Human

References (6)

Package

100 µl, 25 µl

Applications

Application Note

*Optimal dilutions/concentrations should be determined by the researcher.

Suggested dilution	Recommended dilution
WB	1:500-1:3000
ICC/IF	1:100-1:1000
IHC-P	1:100-1:1000
IP	1:100-1:500

Not tested in other applications.

Calculated MW 68 kDa. ([Note](#))

Properties

Form	Liquid
Buffer	PBS
Preservative	No preservatives
Storage	Store as concentrated solution. Centrifuge briefly prior to opening vial. For short-term storage (1-2 weeks), store at 4°C. For long-term storage, aliquot and store at -20°C or below. Avoid multiple freeze-thaw cycles.
Concentration	0.81 mg/ml (Please refer to the vial label for the specific concentration.)
Immunogen	Recombinant protein encompassing a sequence within the center region of human Lamin B2. The exact sequence is proprietary.
Purification	Affinity purified by Protein G.
Conjugation	Unconjugated



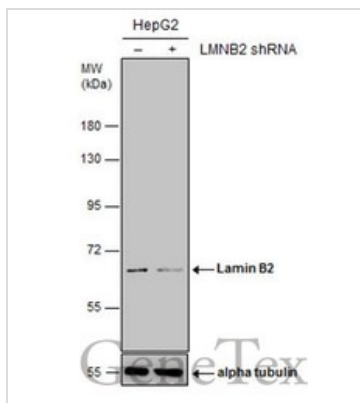
For full product information, images and publications, please visit our [website](#).

For laboratory research use only. Not for any clinical, therapeutic, or diagnostic use in humans or animals. Not for animal or human consumption.

Note

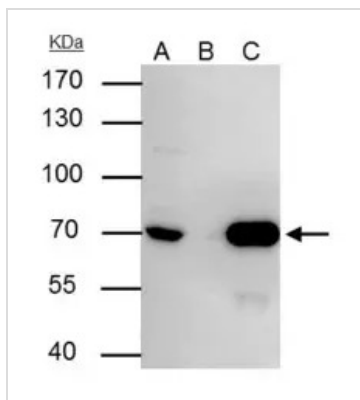
Purchasers shall not, and agree not to enable third parties to, analyze, copy, reverse engineer or otherwise attempt to determine the structure or sequence of the product.

DATA IMAGES



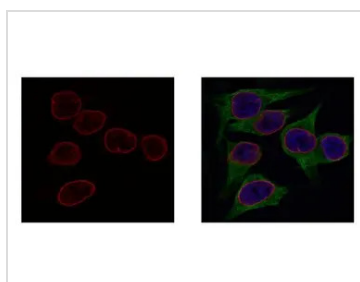
GTx628803 WB Image

Non-transfected (–) and transfected (+) HepG2 whole cell extracts (30 µg) were separated by 7.5% SDS-PAGE, and the membrane was blotted with Lamin B2 antibody [GT144] (GTx628803) diluted at 1:1000. The HRP-conjugated anti-mouse IgG antibody (GTx213111-01) was used to detect the primary antibody.



GTx628803 IP Image

Lamin B2 antibody [GT144] immunoprecipitates Lamin B2 protein in IP experiments. IP Sample: HepG2 whole cell lysate/extract A : 30 µg whole cell lysate/extract of Lamin B2 protein expressing HepG2 cells B : Control with 3 µg of pre-immune mouse IgG C : Immunoprecipitation of Lamin B2 by 3 µg of Lamin B2 antibody [GT144] (GTx628803) 7.5% SDS-PAGE The immunoprecipitated Lamin B2 protein was detected by Lamin B2 antibody [GT144] (GTx628803) diluted at 1 : 1000. EasyBlot anti-rabbit IgG (HRP) (GTx221667-01) was used as a secondary reagent.



GTx628803 ICC/IF Image

Lamin B2 antibody [GT144] detects LMNB2 protein at nuclear envelope by confocal immunofluorescent analysis.

Sample: HeLa cells were fixed in 2% paraformaldehyde for 30 min.

Red: LMNB2 protein stained by Lamin B2 antibody [GT144] (GTx628803) diluted at 1:1000.

Green: alpha Tubulin antibody (GTx102078) diluted at 1:1000.

Blue: Hoechst 33342 staining. [Images captured by Olympus FV1000 Confocal Laser Scanning Microscope]



For full product information, images and publications, please visit our [website](https://www.genetex.com).