

## Transgelin antibody [GT336]

Cat. No. GTX628831

<b>Host</b>	Mouse
<b>Clonality</b>	Monoclonal
<b>Isotype</b>	IgG2a
<b>Applications</b>	WB, ICC/IF, IHC-P
<b>Reactivity</b>	Human, Mouse, Rat

**Package**  
100 µl, 25 µl

## Applications

## Application Note

\*Optimal dilutions/concentrations should be determined by the researcher.

Suggested dilution	Recommended dilution
WB	1:500-1:3000
ICC/IF	1:100-1:1000
IHC-P	1:100-1:1000

Not tested in other applications.

**Calculated MW** 23 kDa. ( [Note](#) )

## Properties

<b>Form</b>	Liquid
<b>Buffer</b>	PBS, 20% Glycerol
<b>Preservative</b>	No preservatives
<b>Storage</b>	Store as concentrated solution. Centrifuge briefly prior to opening vial. For short-term storage (1-2 weeks), store at 4°C. For long-term storage, aliquot and store at -20°C or below. Avoid multiple freeze-thaw cycles.
<b>Concentration</b>	1 mg/ml (Please refer to the vial label for the specific concentration.)
<b>Immunogen</b>	Recombinant protein encompassing a sequence within the center region of human Transgelin. The exact sequence is proprietary.
<b>Purification</b>	Affinity purified by Protein G.
<b>Conjugation</b>	Unconjugated

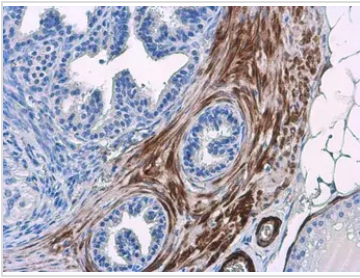
## Note

For laboratory research use only. Not for any clinical, therapeutic, or diagnostic use in humans or animals. Not for animal or human consumption.

Purchasers shall not, and agree not to enable third parties to, analyze, copy, reverse engineer or otherwise attempt to determine the structure or sequence of the product.



For full product information, images and publications, please visit our [website](#).

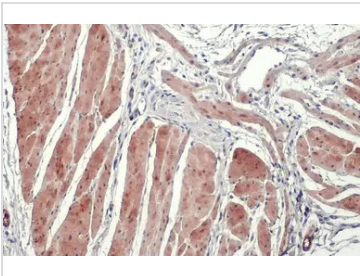
**DATA IMAGES**

**GTX628831 IHC-P Image**

Transgelin antibody [GT336] detects Transgelin protein at cytoplasm by immunohistochemical analysis.

Sample: Paraffin-embedded mouse prostate.

Transgelin stained by Transgelin antibody [GT336] (GTX628831) diluted at 1:500.

Antigen Retrieval: Citrate buffer, pH 6.0, 15 min

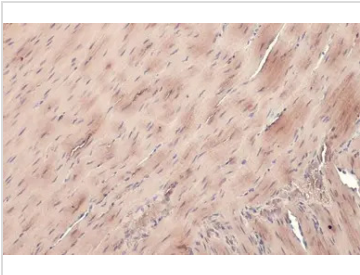

**GTX628831 IHC-P Image**

Transgelin antibody [GT336] detects Transgelin protein at cytoplasm by immunohistochemical analysis.

Sample: Paraffin-embedded mouse smooth muscle.

Transgelin stained by Transgelin antibody [GT336] (GTX628831) diluted at 1:200.

Antigen Retrieval: Citrate buffer, pH 6.0, 15 min

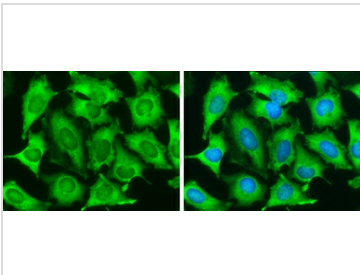

**GTX628831 IHC-P Image**

Transgelin antibody [GT336] detects Transgelin protein at cytoplasm by immunohistochemical analysis.

Sample: Paraffin-embedded rat smooth muscle.

Transgelin stained by Transgelin antibody [GT336] (GTX628831) diluted at 1:200.

Antigen Retrieval: Citrate buffer, pH 6.0, 15 min


**GTX628831 ICC/IF Image**

Transgelin antibody [GT336] detects Transgelin protein at cytoplasm by immunofluorescent analysis.

Sample: HeLa cells were fixed in 4% paraformaldehyde at RT for 15 min.

Green: Transgelin stained by Transgelin antibody [GT336] (GTX628831) diluted at 1:500.

Blue: Hoechst 33342 staining.



For full product information, images and publications, please visit our [website](https://www.genetex.com).