

Pancreatic Polypeptide antibody [GT6512]

Cat. No. GTX628832

Host	Mouse
Clonality	Monoclonal
Isotype	IgG2b
Applications	WB, ICC/IF, IHC-P
Reactivity	Human, Mouse

Package
100 µl, 25 µl

Applications

Application Note

*Optimal dilutions/concentrations should be determined by the researcher.

Suggested dilution	Recommended dilution
WB	1:1000-1:10000
ICC/IF	1:100-1:1000
IHC-P	1:100-1:1000

Not tested in other applications.

Calculated MW 10 kDa. ([Note](#))

Properties

Form	Liquid
Buffer	PBS
Preservative	No preservatives
Storage	Store as concentrated solution. Centrifuge briefly prior to opening vial. For short-term storage (1-2 weeks), store at 4°C. For long-term storage, aliquot and store at -20°C or below. Avoid multiple freeze-thaw cycles.
Concentration	1 mg/ml (Please refer to the vial label for the specific concentration.)
Immunogen	Carrier-protein conjugated synthetic peptide encompassing a sequence within the center region of human Pancreatic polypeptide. The exact sequence is proprietary.
Purification	Affinity purified by Protein G.
Conjugation	Unconjugated

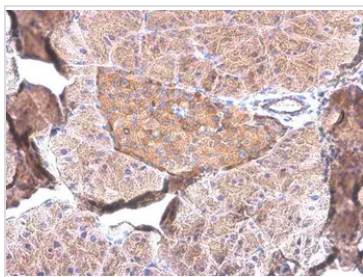
Note

For laboratory research use only. Not for any clinical, therapeutic, or diagnostic use in humans or animals. Not for animal or human consumption.

Purchasers shall not, and agree not to enable third parties to, analyze, copy, reverse engineer or otherwise attempt to determine the structure or sequence of the product.



For full product information, images and publications, please visit our [website](#).

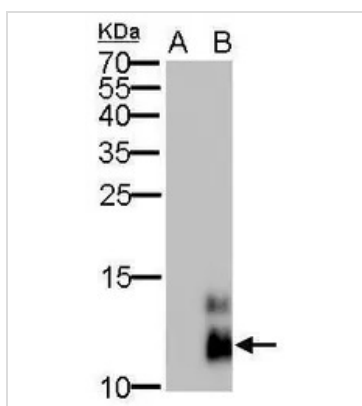
DATA IMAGES

GTx628832 IHC-P Image

Pancreatic Polypeptide antibody [GT6512] detects Pancreatic Polypeptide protein at cytoplasm by immunohistochemical analysis.

Sample: Paraffin-embedded mouse pancreas.

Pancreatic Polypeptide stained by Pancreatic Polypeptide antibody [GT6512] (GTx628832) diluted at 1:500.

Antigen Retrieval: Citrate buffer, pH 6.0, 15 min


GTx628832 WB Image

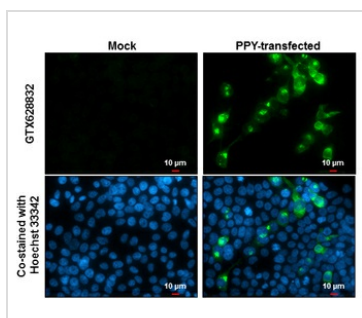
Pancreatic polypeptide antibody [GT6512] detects PPY protein by Western blot analysis.

A. 30 ug 293T whole cell lysate/extract

B. 30 ug whole cell lysate/extract of human PPY-transfected 293T cells

15 % SDS-PAGE

Pancreatic polypeptide antibody [GT6512] (GTx628832) dilution: 1:5000


GTx628832 ICC/IF Image

Pancreatic Polypeptide antibody [GT6512] detects Pancreatic Polypeptide protein at cytoplasm by immunofluorescent analysis.

Sample: Mock and transfected 293T cells were fixed in 4% paraformaldehyde at RT for 15 min.

Green: Pancreatic Polypeptide stained by Pancreatic Polypeptide antibody [GT6512] (GTx628832) diluted at 1:2000.

Blue: Hoechst 33342 staining.

Scale bar= 10μm.



For full product information, images and publications, please visit our [website](#).