

HMGB1 antibody [GT348]

Cat. No. GTX628835

Host	Mouse
Clonality	Monoclonal
Isotype	IgG2a
Applications	WB, ICC/IF, IHC-P, IHC-Fr
Reactivity	Human, Mouse, Rat

References (1)

Package

100 µl, 25 µl

Applications

Application Note

*Optimal dilutions/concentrations should be determined by the researcher.

Suggested dilution	Recommended dilution
WB	1:500-1:3000
ICC/IF	1:100-1:1000
IHC-P	1:100-1:1000
IHC-Fr	1:100-1:1000

Not tested in other applications.

Calculated MW 25 kDa. ([Note](#))

Properties

Form	Liquid
Buffer	PBS
Preservative	No preservatives
Storage	Store as concentrated solution. Centrifuge briefly prior to opening vial. For short-term storage (1-2 weeks), store at 4°C. For long-term storage, aliquot and store at -20°C or below. Avoid multiple freeze-thaw cycles.
Concentration	0.88 mg/ml (Please refer to the vial label for the specific concentration.)
Immunogen	Recombinant protein encompassing a sequence within the center region of human HMGB1. The exact sequence is proprietary.
Purification	Affinity purified by Protein G.
Conjugation	Unconjugated

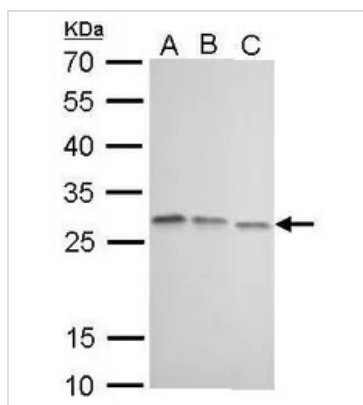


For full product information, images and publications, please visit our [website](#).

For laboratory research use only. Not for any clinical, therapeutic, or diagnostic use in humans or animals. Not for animal or human consumption.

Note

Purchasers shall not, and agree not to enable third parties to, analyze, copy, reverse engineer or otherwise attempt to determine the structure or sequence of the product.

DATA IMAGES

GTX628835 WB Image

HMGB1 antibody [GT348] detects HMGB1 protein by western blot analysis.

A. 30 µg 293T whole cell lysate/extract

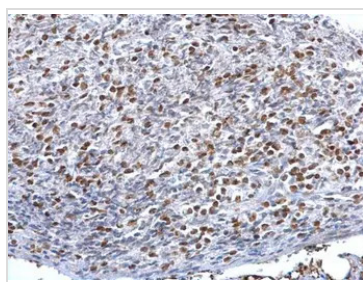
B. 30 µg A431 whole cell lysate/extract

C. 30 µg HepG2 whole cell lysate/extract

12% SDS-PAGE

HMGB1 antibody [GT348] (GTX628835) dilution: 1:1000

The HRP-conjugated anti-mouse IgG antibody (GTX213111-01) was used to detect the primary antibody.

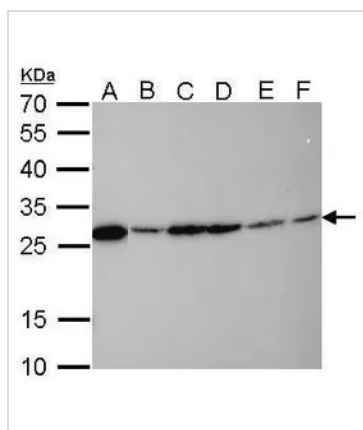

GTX628835 IHC-P Image

HMGB1 antibody [GT348] detects HMGB1 protein at nucleus on mouse lymph node by immunohistochemical analysis.

Sample: Paraffin-embedded mouse lymph node.

HMGB1 antibody [GT348] (GTX628835) dilution: 1:500.

Antigen Retrieval: Trilogy™ (EDTA based, pH 8.0) buffer, 15min


GTX628835 WB Image

HMGB1 antibody [GT348] detects HMGB1 protein by western blot analysis.

A. 30 µg Neuro2A whole cell lysate/extract

B. 30 µg C8D30 whole cell lysate/extract

C. 30 µg NIH-3T3 whole cell lysate/extract

D. 30 µg BCL-1 whole cell lysate/extract

E. 30 µg Raw264.7 whole cell lysate/extract

F. 30 µg C2C12 whole cell lysate/extract

12% SDS-PAGE

HMGB1 antibody [GT348] (GTX628835) dilution: 1:500

The HRP-conjugated anti-mouse IgG antibody (GTX213111-01) was used to detect the primary antibody.



For full product information, images and publications, please visit our [website](https://www.genetex.com).