

# PARP antibody [GT6212]

**Cat. No. GTX628836**

<b>Host</b>	Mouse
<b>Clonality</b>	Monoclonal
<b>Isotype</b>	IgG2b
<b>Application</b>	WB, IHC-P, IP
<b>Reactivity</b>	Human, Mouse, Rat

Reference ( 4 )

Package

100 µl, 25 µl

## APPLICATION

### Application Note

\*Optimal dilutions/concentrations should be determined by the researcher.

Suggested dilution	Recommended dilution
WB	1:500-1:3000
IHC-P	1:100-1:1000
IP	Assay dependent

Not tested in other applications.

**Calculated MW** 113 kDa. ( [Note](#) )

### Product Note

This antibody is specific for human PARP1 protein, and it does not cross react with human PARP2 and PARP3 protein. IP/MS validation was supported by references (PMID:30377422)

## PROPERTIES

<b>Form</b>	Liquid
<b>Buffer</b>	PBS, 20% Glycerol
<b>Preservative</b>	No Preservative
<b>Storage</b>	Store as concentrated solution. Centrifuge briefly prior to opening vial. For short-term storage (1-2 weeks), store at 4°C. For long-term storage, aliquot and store at -20°C or below. Avoid multiple freeze-thaw cycles.
<b>Concentration</b>	1 mg/ml (Please refer to the vial label for the specific concentration.)
<b>Immunogen</b>	Recombinant protein encompassing a sequence within the center region of human PARP1. The exact sequence is proprietary.
<b>Purification</b>	Affinity purified by Protein G.
<b>Conjugation</b>	Unconjugated

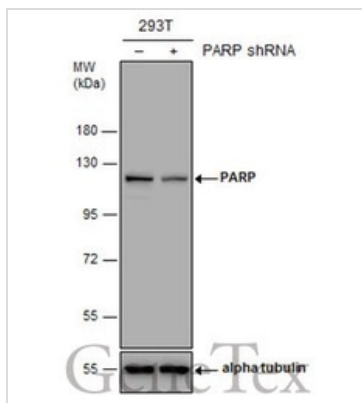


For full product information, images and publications, please visit our [website](#).

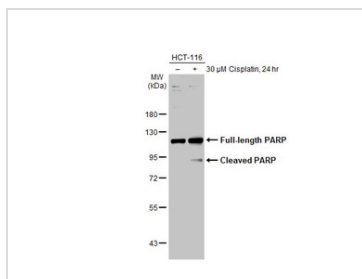
For laboratory research use only. Not for any clinical, therapeutic, or diagnostic use in humans or animals. Not for animal or human consumption.

**Note**

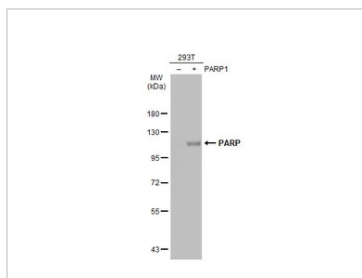
Purchasers shall not, and agree not to enable third parties to, analyze, copy, reverse engineer or otherwise attempt to determine the structure or sequence of the product.

**DATA IMAGES**

**GTX628836 WB Image**

Non-transfected (–) and transfected (+) 293T whole cell extracts (30 µg) were separated by 7.5% SDS-PAGE, and the membrane was blotted with PARP antibody [GT6212] (GTX628836) diluted at 1:1000.


**GTX628836 WB Image**

Untreated (–) and treated (+) HCT-116 whole cell extract (30 µg) were separated by 7.5% SDS-PAGE, and the membrane was blotted with PARP antibody [GT6212] (GTX628836) diluted at 1:1000. The HRP-conjugated anti-mouse IgG antibody (GTX213111-01) was used to detect the primary antibody.


**GTX628836 WB Image**

Non-transfected (–) and transfected (+) 293T whole cell extracts (30 µg) were separated by 7.5% SDS-PAGE, and the membrane was blotted with PARP antibody [GT6212] (GTX628836) diluted at 1:1000. The HRP-conjugated anti-mouse IgG antibody (GTX213111-01) was used to detect the primary antibody.



For full product information, images and publications, please visit our [website](https://www.genetex.com).