

COX4 antibody [GT6310]

Cat. No. GTX628886

Host	Mouse
Clonality	Monoclonal
Isotype	IgG2b
Applications	WB, ICC/IF, IHC-P
Reactivity	Human, Rat

References (4)

Package

100 µl, 25 µl

Applications

Application Note

*Optimal dilutions/concentrations should be determined by the researcher.

Suggested dilution	Recommended dilution
WB	1:500-1:3000
ICC/IF	1:100-1:1000
IHC-P	1:100-1:1000

Not tested in other applications.

Calculated MW 20 kDa. ([Note](#))

Properties

Form	Liquid
Buffer	PBS, 20% Glycerol
Preservative	No Preservative
Storage	Store as concentrated solution. Centrifuge briefly prior to opening vial. For short-term storage (1-2 weeks), store at 4°C. For long-term storage, aliquot and store at -20°C or below. Avoid multiple freeze-thaw cycles.
Concentration	1 mg/ml (Please refer to the vial label for the specific concentration.)
Immunogen	Recombinant protein encompassing a sequence within the center region of human COX4. The exact sequence is proprietary.
Purification	Affinity purified by Protein G.
Conjugation	Unconjugated

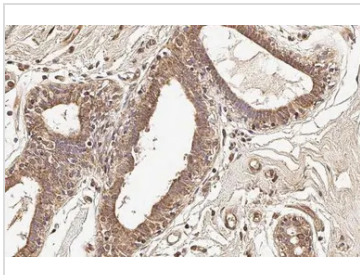
Note

For laboratory research use only. Not for any clinical, therapeutic, or diagnostic use in humans or animals. Not for animal or human consumption.

Purchasers shall not, and agree not to enable third parties to, analyze, copy, reverse engineer or otherwise attempt to determine the structure or sequence of the product.



For full product information, images and publications, please visit our [website](#).

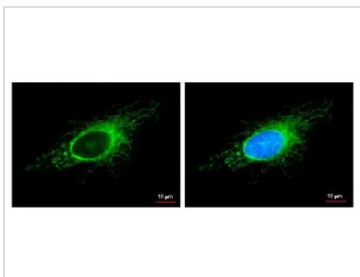
DATA IMAGES

GTX628886 IHC-P Image

COX4 antibody [GT6310] detects COX4 protein at mitochondria by immunohistochemical analysis.

Sample: Paraffin-embedded human breast carcinoma.

COX4 stained by COX4 antibody [GT6310] (GTX628886) diluted at 1:200.

Antigen Retrieval: Citrate buffer, pH 6.0, 15 min

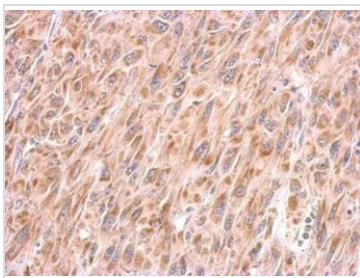

GTX628886 ICC/IF Image

COX4I1 antibody detects COX4I1 protein at mitochondria by immunofluorescent analysis.

Sample: HeLa cells were fixed in -20°C 100% methanol for 5 min.

Green: COX4I1 protein stained by COX4I1 antibody (GTX628886) diluted at 1:500.

Blue: Hoechst 33342 staining.

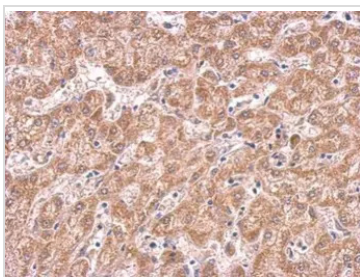

GTX628886 IHC-P Image

COX4 antibody [GT6310] detects COX4I1 protein at cytosol on U87 xenograft by immunohistochemical analysis.

Sample: Paraffin-embedded U87 xenograft.

COX4 antibody [GT6310] (GTX628886) dilution: 1:200.

Antigen Retrieval: Trilogy™ (EDTA based, pH 8.0) buffer, 15min


GTX628886 IHC-P Image

COX4 antibody [GT6310] detects COX4I1 protein at cytosol on human hepatoma by immunohistochemical analysis.

Sample: Paraffin-embedded hepatoma.

COX4 antibody [GT6310] (GTX628886) dilution: 1:200.

Antigen Retrieval: Trilogy™ (EDTA based, pH 8.0) buffer, 15min



For full product information, images and publications, please visit our [website](https://www.genetex.com).