

EGFR antibody [GT461]

Cat. No. GTX628888

Host	Mouse
Clonality	Monoclonal
Isotype	IgG2a
Applications	WB, ICC/IF, IHC-P, IP
Reactivity	Human

References (4)

Package

100 µl, 25 µl

Applications

Application Note

*Optimal dilutions/concentrations should be determined by the researcher.

Suggested dilution	Recommended dilution
WB	1:500-1:3000
ICC/IF	1:100-1:1000
IHC-P	Assay dependent
IP	1:100-1:500

Not tested in other applications.

Calculated MW	134 kDa. (Note)
Observed MW (kDa)	180 kDa.

Product Note

This antibody was raised against human EGFR Intracellular domain.
IP/MS validation is based on published data (PMID: 30377424).

Properties

Form	Liquid
Buffer	PBS
Preservative	No preservatives
Storage	Store as concentrated solution. Centrifuge briefly prior to opening vial. For short-term storage (1-2 weeks), store at 4°C. For long-term storage, aliquot and store at -20°C or below. Avoid multiple freeze-thaw cycles.
Concentration	1.01 mg/ml (Please refer to the vial label for the specific concentration.)
Immunogen	Recombinant protein encompassing a sequence within the Intracellular domain of human EGFR. The exact sequence is proprietary.
Purification	Affinity purified by Protein G.
Conjugation	Unconjugated

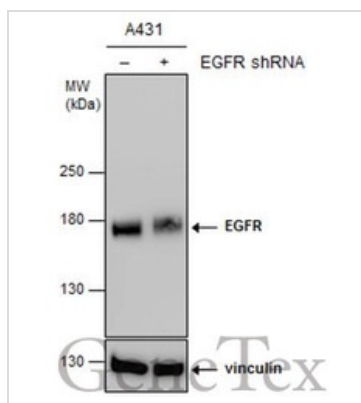


For full product information, images and publications, please visit our [website](#).

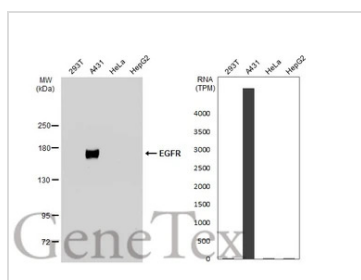
For laboratory research use only. Not for any clinical, therapeutic, or diagnostic use in humans or animals. Not for animal or human consumption.

Note

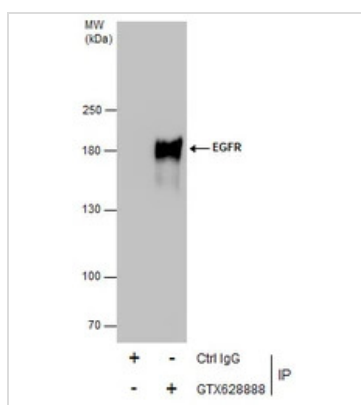
Purchasers shall not, and agree not to enable third parties to, analyze, copy, reverse engineer or otherwise attempt to determine the structure or sequence of the product.

DATA IMAGES

GTX628888 WB Image

Non-transfected (-) and transfected (+) A431 whole cell extracts (15 µg) were separated by 5% SDS-PAGE, and the membrane was blotted with EGFR antibody [GT461] (GTX628888) diluted at 1:8000.


GTX628888 WB Image

Various whole cell extracts (30 µg) were separated by 5% SDS-PAGE, and the membrane was blotted with EGFR antibody [GT461] (GTX628888) diluted at 1:5000. The HRP-conjugated anti-mouse IgG antibody (GTX213111-01) was used to detect the primary antibody. Corresponding RNA expression data for the same cell lines are based on Human Protein Atlas program.


GTX628888 IP Image

Immunoprecipitation of EGFR protein from A431 whole cell extracts using 5 µg of EGFR antibody [GT461] (GTX628888).

Western blot analysis was performed using EGFR antibody [GT461] (GTX628888).

EasyBlot anti-Mouse IgG (GTX221667-01) was used as a secondary reagent.



For full product information, images and publications, please visit our [website](https://www.genetex.com).