

Glyoxalase I antibody [GT266]

Cat. No. GTX628889

Host	Mouse
Clonality	Monoclonal
Isotype	IgG2b
Application	WB, ICC/IF, IHC-P
Reactivity	Human

Package
100 µl, 25 µl

APPLICATION

Application Note

*Optimal dilutions/concentrations should be determined by the researcher.

Suggested dilution	Recommended dilution
WB	1:500-1:3000
ICC/IF	1:100-1:1000
IHC-P	1:100-1:1000

Not tested in other applications.

Calculated MW 21 kDa. ([Note](#))

PROPERTIES

Form	Liquid
Buffer	PBS
Preservative	No preservative
Storage	Store as concentrated solution. Centrifuge briefly prior to opening vial. For short-term storage (1-2 weeks), store at 4°C. For long-term storage, aliquot and store at -20°C or below. Avoid multiple freeze-thaw cycles.
Concentration	1 mg/ml (Please refer to the vial label for the specific concentration.)
Immunogen	Recombinant protein encompassing a sequence within the center region of human Glyoxalase I. The exact sequence is proprietary.
Purification	Affinity purified by Protein G.
Conjugation	Unconjugated

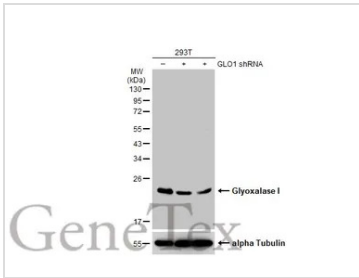
Note For laboratory research use only. Not for any clinical, therapeutic, or diagnostic use in humans or animals. Not for animal or human consumption.

Purchasers shall not, and agree not to enable third parties to, analyze, copy, reverse engineer or otherwise attempt to determine the structure or sequence of the product.



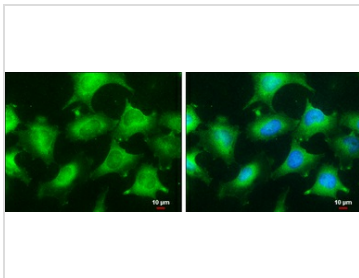
For full product information, images and publications, please visit our [website](#).

DATA IMAGES



GTX628889 WB Image

Non-transfected (–) and transfected (+) 293T whole cell extracts (30 µg) were separated by 12% SDS-PAGE, and the membrane was blotted with Glyoxalase I antibody [GT266] (GTX628889) diluted at 1:1000. The HRP-conjugated anti-mouse IgG antibody (GTX213111-01) was used to detect the primary antibody.



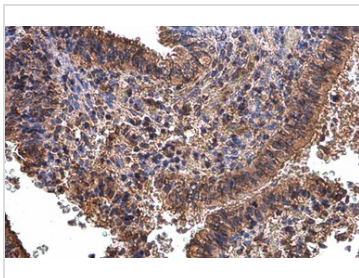
GTX628889 ICC/IF Image

Glyoxalase I antibody [GT266] detects Glyoxalase I protein at cytoplasm by immunofluorescent analysis. Sample: HeLa cells were fixed in 4% paraformaldehyde at RT for 15 min.

Green: Glyoxalase I stained by Glyoxalase I antibody [GT266] (GTX628889) diluted at 1:100.

Blue: Hoechst 33342 staining.

Scale bar= 10 µm.



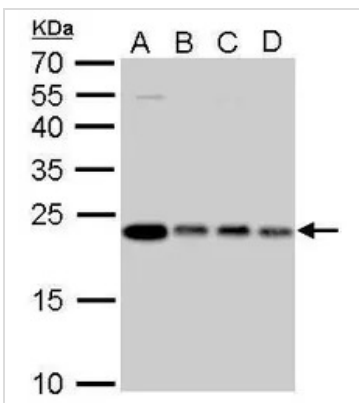
GTX628889 IHC-P Image

Glyoxalase I antibody [GT266] detects Glyoxalase I protein at cytoplasm by immunohistochemical analysis.

Sample: Paraffin-embedded human ovarian cancer.

Glyoxalase I stained by Glyoxalase I antibody [GT266] (GTX628889) diluted at 1:200.

Antigen Retrieval: Citrate buffer, pH 6.0, 15 min



GTX628889 WB Image

Glyoxalase I antibody [GT266] detects GLO1 protein by Western blot analysis.

A. 30 µg 293T whole cell lysate/extract

B. 30 µg HeLa whole cell lysate/extract

C. 30 µg HepG2 whole cell lysate/extract

D. 30 µg A375 whole cell lysate/extract

12 % SDS-PAGE

Glyoxalase I antibody [GT266] (GTX628889) dilution: 1:1000



For full product information, images and publications, please visit our [website](https://www.genetex.com).