

# Glyoxalase I antibody [GT552]

**Cat. No. GTX628890**

<b>Host</b>	Mouse
<b>Clonality</b>	Monoclonal
<b>Isotype</b>	IgG1
<b>Application</b>	WB, ICC/IF, IHC-P
<b>Reactivity</b>	Human, Mouse, Rat

Reference ( 2 )  
 Package  
 100 µl, 25 µl

## APPLICATION

### Application Note

\*Optimal dilutions/concentrations should be determined by the researcher.

Suggested dilution	Recommended dilution
WB	1:500-1:3000
ICC/IF	1:100-1:1000
IHC-P	1:100-1:1000

Not tested in other applications.

**Calculated MW** 21 kDa. ( [Note](#) )

## PROPERTIES

<b>Form</b>	Liquid
<b>Buffer</b>	PBS
<b>Preservative</b>	No preservative
<b>Storage</b>	Store as concentrated solution. Centrifuge briefly prior to opening vial. For short-term storage (1-2 weeks), store at 4°C. For long-term storage, aliquot and store at -20°C or below. Avoid multiple freeze-thaw cycles.
<b>Concentration</b>	1 mg/ml (Please refer to the vial label for the specific concentration.)
<b>Immunogen</b>	Recombinant protein encompassing a sequence within the center region of human Glyoxalase I. The exact sequence is proprietary.
<b>Purification</b>	Affinity purified by Protein G.
<b>Conjugation</b>	Unconjugated

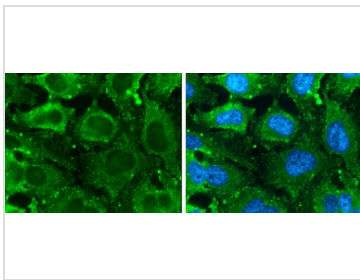
### Note

For laboratory research use only. Not for any clinical, therapeutic, or diagnostic use in humans or animals. Not for animal or human consumption.

Purchasers shall not, and agree not to enable third parties to, analyze, copy, reverse engineer or otherwise attempt to determine the structure or sequence of the product.



For full product information, images and publications, please visit our [website](#).

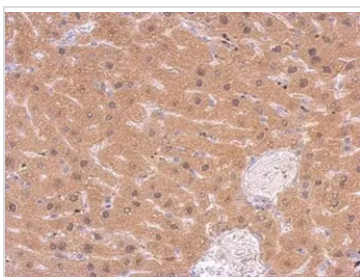
**DATA IMAGES**

**GTX628890 ICC/IF Image**

Glyoxalase I antibody [GT552] detects Glyoxalase I protein at cytoplasm by immunofluorescent analysis.

Sample: HeLa cells were fixed in 4% paraformaldehyde at RT for 15 min.

Green: Glyoxalase I stained by Glyoxalase I antibody [GT552] (GTX628890) diluted at 1:100.

Blue: Hoechst 33342 staining.

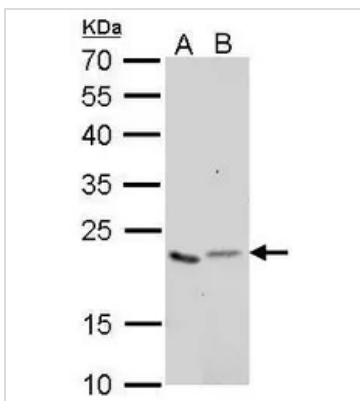

**GTX628890 IHC-P Image**

Glyoxalase I antibody [GT552] detects GLO1 protein at cytosol and nucleus on mouse liver by immunohistochemical analysis.

Sample: Paraffin-embedded mouse liver.

Glyoxalase I antibody [GT552] (GTX628890) dilution: 1:200.

Antigen Retrieval: Trilogy™ (EDTA based, pH 8.0) buffer, 15min


**GTX628890 WB Image**

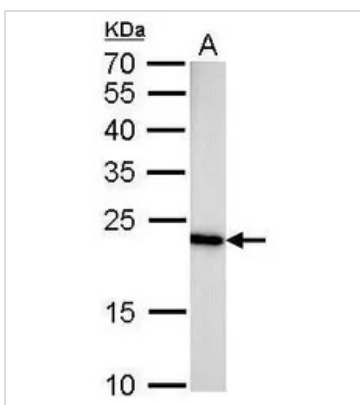
Glyoxalase I antibody [GT542] detects GLO1 protein by Western blot analysis.

A. 30 µg 293T whole cell lysate/extract

B. 30 µg HepG2 whole cell lysate/extract

12 % SDS-PAGE

Glyoxalase I antibody [GT542] (GTX628890) dilution: 1:1000


**GTX628890 WB Image**

Glyoxalase I antibody [GT542] detects GLO1 protein by Western blot analysis.

A. 50 µg rat brain lysate/extract

12 % SDS-PAGE

Glyoxalase I antibody [GT542] (GTX628890) dilution: 1:1000



For full product information, images and publications, please visit our [website](https://www.genetex.com).