

PEX19 antibody [GT533]

Cat. No. GTX628892

Host	Mouse
Clonality	Monoclonal
Isotype	IgG2b
Application	WB, ICC/IF, FACS
Reactivity	Human, Rat

Package
100 µl, 25 µl

APPLICATION

Application Note

*Optimal dilutions/concentrations should be determined by the researcher.

Suggested dilution	Recommended dilution
WB	1:500-1:3000
ICC/IF	1:100-1:1000
FACS	1:50-1:200

Not tested in other applications.

Calculated MW 33 kDa. ([Note](#))

PROPERTIES

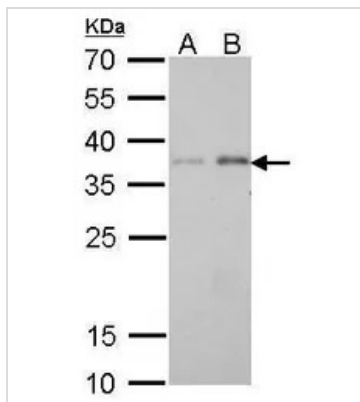
Form	Liquid
Buffer	PBS
Preservative	No preservative
Storage	Store as concentrated solution. Centrifuge briefly prior to opening vial. For short-term storage (1-2 weeks), store at 4°C. For long-term storage, aliquot and store at -20°C or below. Avoid multiple freeze-thaw cycles.
Concentration	1.17 mg/ml (Please refer to the vial label for the specific concentration.)
Immunogen	Recombinant protein encompassing a sequence within the center region of human PEX19. The exact sequence is proprietary.
Purification	Affinity purified by Protein G.
Conjugation	Unconjugated

Note For laboratory research use only. Not for any clinical, therapeutic, or diagnostic use in humans or animals. Not for animal or human consumption.

Purchasers shall not, and agree not to enable third parties to, analyze, copy, reverse engineer or otherwise attempt to determine the structure or sequence of the product.



For full product information, images and publications, please visit our [website](#).

DATA IMAGES

GTX628892 WB Image

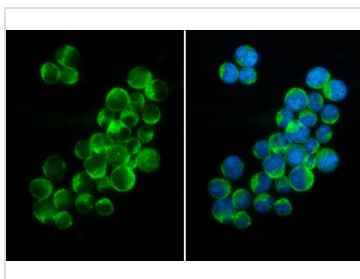
PEX19 antibody [GT533] detects PEX19 protein by Western blot analysis.

A. 30 µg PC-12 whole cell lysate/extract

B. 30 µg Rat-2 whole cell lysate/extract

12 % SDS-PAGE

PEX19 antibody [GT533] (GTX628892) dilution: 1:500

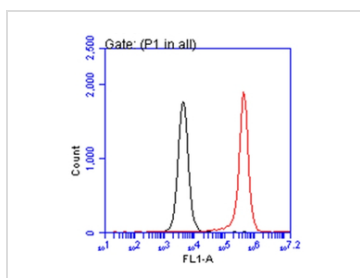

GTX628892 ICC/IF Image

PEX19 antibody [GT533] detects PEX19 protein at cytoplasm by immunofluorescent analysis.

Sample: Jurkat cells were fixed in 4% paraformaldehyde at RT for 15 min.

Green: PEX19 stained by PEX19 antibody [GT533] (GTX628892) diluted at 1:500.

Blue: Fluoroshield with DAPI (GTX30920).


GTX628892 FACS Image

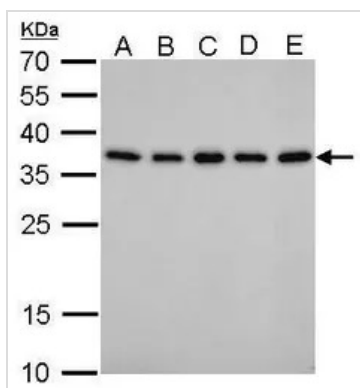
PEX19 antibody [GT533] (GTX628892) detects PEX19 protein by flow cytometry analysis.

Sample: THP-1 cell.

Black: Unlabelled sample was used as a control.

Red: PEX19 antibody [GT533] (GTX628892) dilution: 1:50.

Acquisition of 20,000 events were collected for FACS analysis.


GTX628892 WB Image

PEX19 antibody [GT533] detects PEX19 protein by Western blot analysis.

A. 30 µg Jurkat whole cell lysate/extract

B. 30 µg Raji whole cell lysate/extract

C. 30 µg K562 whole cell lysate/extract

D. 30 µg THP-1 whole cell lysate/extract

E. 30 µg NCI-H929 whole cell lysate/extract

12 % SDS-PAGE

PEX19 antibody [GT533] (GTX628892) dilution: 1:1000



For full product information, images and publications, please visit our [website](https://www.genetex.com).