

GFP antibody [GT7312]

Cat. No. GTX628894

Host	Mouse
Clonality	Monoclonal
Isotype	IgG2a
Applications	WB, IP, ELISA, Sandwich ELISA
Reactivity	Species independent

References (3)

Package

100 µl, 25 µl

Applications

Application Note

*Optimal dilutions/concentrations should be determined by the researcher.

Suggested dilution	Recommended dilution
WB	1:5000-1:20000
IP	1:100-1:500
ELISA	1:1000-1:10000
Sandwich ELISA	Assay dependent

Note : Capture: GTX628894 , Detection: GTX113617

Not tested in other applications.

Calculated MW 29 kDa. ([Note](#))**Product Note** This antibody reacts with GFP variants including GFP, EGFP, and YFP.

Properties

Form	Liquid
Buffer	PBS
Preservative	No preservatives
Storage	Store as concentrated solution. Centrifuge briefly prior to opening vial. For short-term storage (1-2 weeks), store at 4°C. For long-term storage, aliquot and store at -20°C or below. Avoid multiple freeze-thaw cycles.
Concentration	1.04 mg/ml (Please refer to the vial label for the specific concentration.)
Immunogen	Full length GFP recombinant protein
Purification	Affinity purified by Protein G.
Conjugation	Unconjugated



For full product information, images and publications, please visit our [website](#).

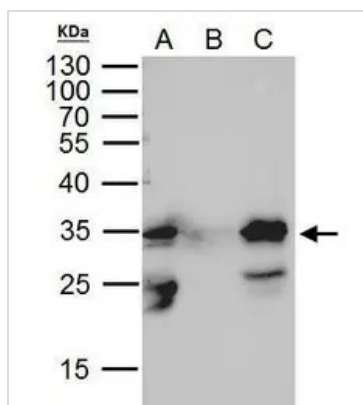
Date 2026 / 01 / 30 Page 1 of 2

For laboratory research use only. Not for any clinical, therapeutic, or diagnostic use in humans or animals. Not for animal or human consumption.

Note

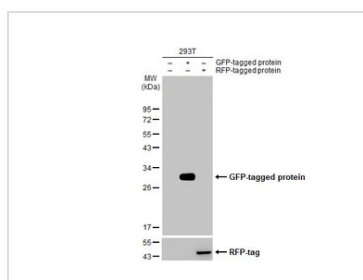
Purchasers shall not, and agree not to enable third parties to, analyze, copy, reverse engineer or otherwise attempt to determine the structure or sequence of the product.

DATA IMAGES



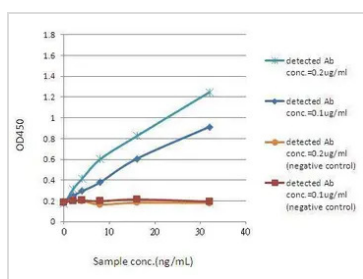
GTX628894 IP Image

GFP tag antibody immunoprecipitates GFP-fused protein in IP experiments. IP Sample: 400 µg cell lysate/extract of GFP-fused gene transfected 293T cells A. 30 µg lysate/extract of transfected 293T cell B. Control with 2 µg of preimmune mouse IgG C. Immunoprecipitation of GFP-fused protein by 2 µg of GFP tag antibody (GTX628894) 12% SDS-PAGE The immunoprecipitated GFP-fused protein was detected by GFP tag antibody (GTX628894) diluted at 1:1000. EasyBlot anti-mouse IgG (GTX221667-01) was used as a secondary reagent.



GTX628894 WB Image

Non-transfected (–) and transfected (+) 293T whole cell extracts (10 µg) were separated by 12% SDS-PAGE, and the membrane was blotted with GFP antibody [GT7312] (GTX628894) diluted at 1:10000. The HRP-conjugated anti-mouse IgG antibody (GTX213111-01) was used to detect the primary antibody.



GTX628894 ELISA Image

ELISA detection of GFP using GTX628894 for capture and GTX113617 for detection.

Coating Ab: mouse anti-GFP (GTX628894, 2 µg/well)

Sample: GFP protein

Detected Ab: rabbit anti-GFP (GTX113617)

Conjugated Ab: goat anti-rabbit IgG-HRP (GTX213110-01, 1:20000)



For full product information, images and publications, please visit our [website](https://www.genetex.com).