

CD44 antibody [GT462]

Cat. No. GTX628895

Host	Mouse
Clonality	Monoclonal
Isotype	IgG2b
Applications	WB, ICC/IF, IHC-P, FCM
Reactivity	Human

References (5)

★★★★★ Review (5)

Package

100 µl, 25 µl

Applications

Application Note

*Optimal dilutions/concentrations should be determined by the researcher.

Suggested dilution	Recommended dilution
WB	1:500-1:3000
ICC/IF	Assay dependent
IHC-P	1:100-1:1000
FCM	1:50-1:200

Not tested in other applications.

Calculated MW 82 kDa. ([Note](#))

Product Note This antibody was raised against human CD44 Extracellular domain. IP/MS validation is based on published data (PMID: 30377425).

Properties

Form	Liquid
Buffer	PBS
Preservative	No preservatives
Storage	Store as concentrated solution. Centrifuge briefly prior to opening vial. For short-term storage (1-2 weeks), store at 4°C. For long-term storage, aliquot and store at -20°C or below. Avoid multiple freeze-thaw cycles.
Concentration	0.7 mg/ml (Please refer to the vial label for the specific concentration.)
Immunogen	Recombinant protein encompassing a sequence within the Extracellular domain of human CD44. The exact sequence is proprietary.
Purification	Affinity purified by Protein G.
Conjugation	Unconjugated



For full product information, images and publications, please visit our [website](#).

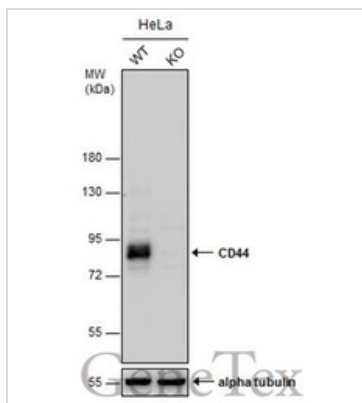
Date 2026 / 01 / 16 Page 1 of 2

For laboratory research use only. Not for any clinical, therapeutic, or diagnostic use in humans or animals. Not for animal or human consumption.

Note

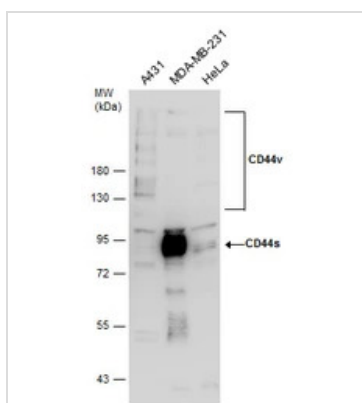
Purchasers shall not, and agree not to enable third parties to, analyze, copy, reverse engineer or otherwise attempt to determine the structure or sequence of the product.

DATA IMAGES



GTX628895 WB Image

Wild-type (WT) and CD44 knockout (KO) HeLa cell extracts (30 µg) were separated by 7.5% SDS-PAGE, and the membrane was blotted with CD44 antibody [GT462] (GTX628895) diluted at 1:500.

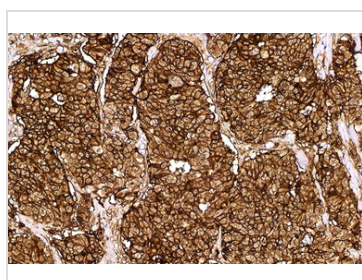


GTX628895 WB Image

Various whole cell extracts (30 µg) were separated by 7.5% SDS-PAGE, and the membrane was blotted with CD44 antibody [GT462] (GTX628895) diluted at 1:1000.

Multiple bands were observed 130~180 kDa. It is possibly due to alternative splicing.

Reference: [PMID: 20962267](https://pubmed.ncbi.nlm.nih.gov/20962267/)



GTX628895 IHC-P Image

CD44 antibody [GT462] detects CD44 protein at cell membrane by immunohistochemical analysis (Autostainer Formulated).

Sample: Paraffin-embedded human breast cancer.

CD44 stained by CD44 antibody [GT462] (GTX628895) diluted at 1:200.

Antigen Retrieval: EDTA buffer, 20 min



For full product information, images and publications, please visit our [website](https://www.genetex.com).