

## Strep epitope Tag antibody [GT661]

**Cat. No. GTX628900**

<b>Host</b>	Mouse
<b>Clonality</b>	Monoclonal
<b>Isotype</b>	IgG2a
<b>Applications</b>	WB, ICC/IF, IP
<b>Reactivity</b>	Species independent

References ( 1 )

★★★★★ Review ( 1 )

Package

100 µl, 25 µl

## Applications

**Application Note**

\*Optimal dilutions/concentrations should be determined by the researcher.

Suggested dilution	Recommended dilution
WB	1:1000-1:10000
ICC/IF	1:100-1:1000
IP	1:100-1:500

Not tested in other applications.

## Properties

<b>Form</b>	Liquid
<b>Buffer</b>	PBS, 20% Glycerol
<b>Preservative</b>	No preservatives
<b>Storage</b>	Store as concentrated solution. Centrifuge briefly prior to opening vial. For short-term storage (1-2 weeks), store at 4°C. For long-term storage, aliquot and store at -20°C or below. Avoid multiple freeze-thaw cycles.
<b>Concentration</b>	1 mg/ml (Please refer to the vial label for the specific concentration.)
<b>Immunogen</b>	Immunogen Amino acid sequence - ASWSHPQFEKGA
<b>Purification</b>	Affinity purified by Protein G.
<b>Conjugation</b>	Unconjugated

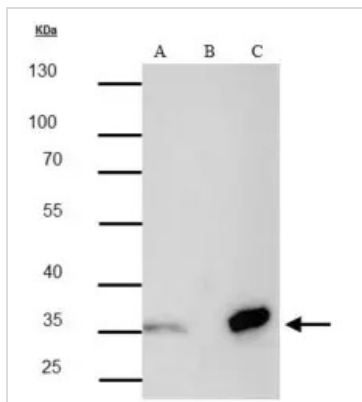
**Note**

For laboratory research use only. Not for any clinical, therapeutic, or diagnostic use in humans or animals. Not for animal or human consumption.

Purchasers shall not, and agree not to enable third parties to, analyze, copy, reverse engineer or otherwise attempt to determine the structure or sequence of the product.

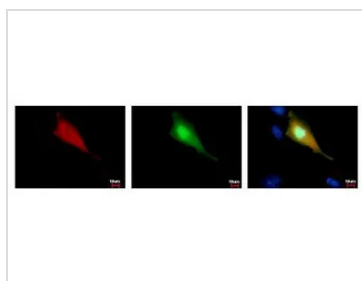
For full product information, images and publications, please visit our [website](#).

DATA IMAGES



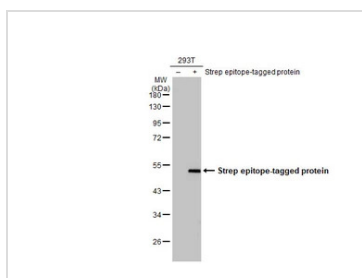
**GTX628900 IP Image**

Strep epitope Tag antibody [GT661] immunoprecipitates strep tagged protein in IP experiments. IP Sample: 293T whole cell lysate/extract A : 20 µg whole cell lysate/extract of strep tagged protein expressing 293T cells B : Control with 2.5 µg of pre-immune mouse IgG C : Immunoprecipitation of strep tagged protein by 2.5 µg of Strep epitope Tag antibody [GT661] (GTX628900) 10% SDS-PAGE The immunoprecipitated strep tagged protein was detected by Strep epitope Tag antibody [GT661] (GTX628900) diluted at 1 : 3000. EasyBlot anti-mouse IgG (HRP) (GTX221667-01) was used as a secondary reagent.



**GTX628900 ICC/IF Image**

Strep epitope Tag antibody [GT661] detects Strep-recombinant protein by immunofluorescent analysis. Sample: Strep/GFP-tag transfected HeLa cells were fixed in 4% paraformaldehyde at RT for 15 min. Red: Strep-recombinant protein stained by Strep epitope Tag antibody [GT661] (GTX628899) diluted at 1:500. Green: GFP is expressed in the transfected cell. Blue: Hoechst 33342 staining.



**GTX628900 WB Image**

Non-transfected (-) and transfected (+) 293T whole cell extracts (30 µg) were separated by 10% SDS-PAGE, and the membrane was blotted with Strep epitope Tag antibody [GT661] (GTX628900) diluted at 1:1000. The HRP-conjugated anti-mouse IgG antibody (GTX213111-01) was used to detect the primary antibody.



For full product information, images and publications, please visit our [website](#).