

## Bcl-2 antibody [GT576]

**Cat. No. GTX628904**

<b>Host</b>	Mouse
<b>Clonality</b>	Monoclonal
<b>Isotype</b>	IgG1
<b>Application</b>	WB, IHC-P
<b>Reactivity</b>	Human

**Package**  
100 µl, 25 µl

### APPLICATION

#### Application Note

\*Optimal dilutions/concentrations should be determined by the researcher.

Suggested dilution	Recommended dilution
WB	1:1000-1:10000
IHC-P	1:100-1:1000

Not tested in other applications.

**Calculated MW** 26 kDa. ( [Note](#) )

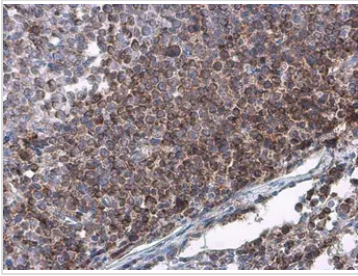
### PROPERTIES

<b>Form</b>	Liquid
<b>Buffer</b>	PBS
<b>Preservative</b>	No preservative
<b>Storage</b>	Store as concentrated solution. Centrifuge briefly prior to opening vial. For short-term storage (1-2 weeks), store at 4°C. For long-term storage, aliquot and store at -20°C or below. Avoid multiple freeze-thaw cycles.
<b>Concentration</b>	1 mg/ml (Please refer to the vial label for the specific concentration.)
<b>Immunogen</b>	Carrier-protein conjugated synthetic peptide encompassing a sequence within the N-terminus region of human Bcl-2. The exact sequence is proprietary.
<b>Purification</b>	Affinity purified by Protein G.
<b>Conjugation</b>	Unconjugated
<b>Note</b>	For laboratory research use only. Not for any clinical, therapeutic, or diagnostic use in humans or animals. Not for animal or human consumption.  Purchasers shall not, and agree not to enable third parties to, analyze, copy, reverse engineer or otherwise attempt to determine the structure or sequence of the product.



For full product information, images and publications, please visit our [website](#).

## DATA IMAGES



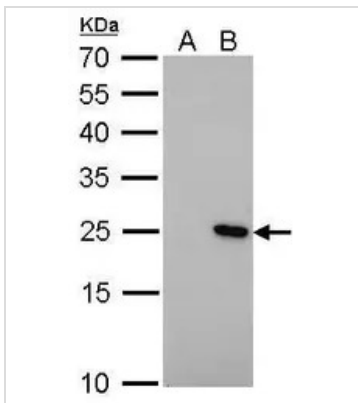
### GTX628904 IHC-P Image

Bcl-2 antibody [GT576] detects Bcl-2 protein at cytoplasm by immunohistochemical analysis.

Sample: Paraffin-embedded human tonsil.

Bcl-2 stained by Bcl-2 antibody [GT576] (GTX628904) diluted at 1:500.

Antigen Retrieval: Citrate buffer, pH 6.0, 15 min



### GTX628904 WB Image

Bcl-2 antibody [GT576] detects Bcl-2 protein by Western blot analysis.

A. 30 µg 293T whole cell lysate/extract

B. 30 µg whole cell lysate/extract of human Bcl-2-transfected 293T cells

12 % SDS-PAGE

Bcl-2 antibody [GT576] (GTX628904) dilution: 1:5000



For full product information, images and publications, please visit our [website](#).