

## 6X His tag antibody [GT359]

**Cat. No. GTX628914**

<b>Host</b>	Mouse
<b>Clonality</b>	Monoclonal
<b>Isotype</b>	IgG3
<b>Applications</b>	WB, ICC/IF, IP, ELISA
<b>Reactivity</b>	Species independent

References ( 51 )

★★★★☆ Review ( 2 )

Package

100 µl, 25 µl

## Applications

**Application Note**

\*Optimal dilutions/concentrations should be determined by the researcher.

Suggested dilution	Recommended dilution
WB	1:1000-1:10000
ICC/IF	1:100-1:2000
IP	1:100-1:500
ELISA	1:1000-1:10000

Not tested in other applications.

## Properties

<b>Form</b>	Liquid
<b>Buffer</b>	PBS
<b>Preservative</b>	No preservatives
<b>Storage</b>	Store as concentrated solution. Centrifuge briefly prior to opening vial. For short-term storage (1-2 weeks), store at 4°C. For long-term storage, aliquot and store at -20°C or below. Avoid multiple freeze-thaw cycles.
<b>Concentration</b>	1 mg/ml (Please refer to the vial label for the specific concentration.)
<b>Immunogen</b>	The immunogen used to generate this antibody corresponds to 6X His tag
<b>Purification</b>	Affinity purified by Protein G.
<b>Conjugation</b>	Unconjugated

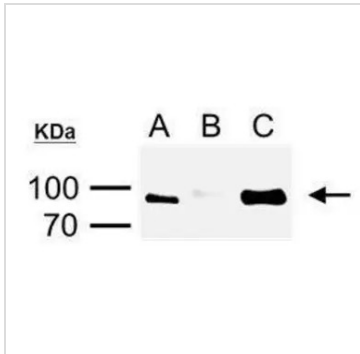
**Note**

For laboratory research use only. Not for any clinical, therapeutic, or diagnostic use in humans or animals. Not for animal or human consumption.

Purchasers shall not, and agree not to enable third parties to, analyze, copy, reverse engineer or otherwise attempt to determine the structure or sequence of the product.

For full product information, images and publications, please visit our [website](#).

DATA IMAGES



**GTX628914 IP Image**

6X His tag antibody [GT359] immunoprecipitates His-fused protein in IP experiments.

IP Sample: cell lysate/extract of His-fused gene transfected HeLa cells

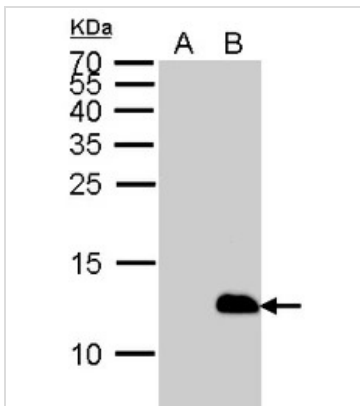
A. 1/20 lysate/extract of transfected HeLa cells

B. Control with 2 µg of preimmune mouse IgG

C. Immunoprecipitation of His-fused protein by 2 µg of 6X His tag antibody [GT359] (GTX628914)

12% SDS-PAGE

The immunoprecipitated His-fused protein was detected by 6X His tag antibody [GT359] (GTX628914) diluted at 1:1000.



**GTX628914 WB Image**

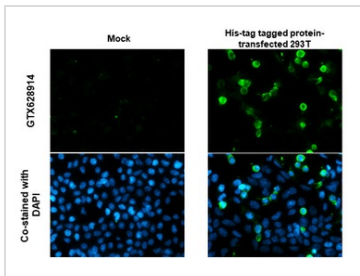
6x His antibody detects 6x His protein by Western blot analysis.

A. Non-induced cell lysates from E. coli expressing HIS-tagged proteins

B. IPTG-induced cell lysates from E. coli expressing HIS-tagged proteins

15 % SDS-PAGE

6x His antibody (GTX628914) dilution: 1:5000



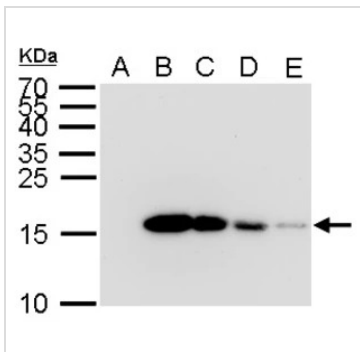
**GTX628914 ICC/IF Image**

6X His tag antibody [GT359] detects 6X His tag protein by immunofluorescent analysis.

Sample: Mock and transfected 293T cells were fixed in 4% paraformaldehyde at RT for 15 min.

Green: 6X His tag stained by 6X His tag antibody [GT359] (GTX628914) diluted at 1:1000.

Blue: Fluoroshield with DAPI (GTX30920).



**GTX628914 WB Image**

6x His antibody detects 6x His protein by Western blot analysis.

A. 2 µg GST-recombinant protein

B. 2 µg His-recombinant protein

C. 1 µg His-recombinant protein

D. 0.5 µg His-recombinant protein E. 0.1 µg His-recombinant protein

E. 0.1 µg His-recombinant protein E. 0.1 µg His-recombinant protein

12 % SDS-PAGE

6x His antibody (GTX628914) dilution: 1:5000



For full product information, images and publications, please visit our [website](http://www.genetex.com).